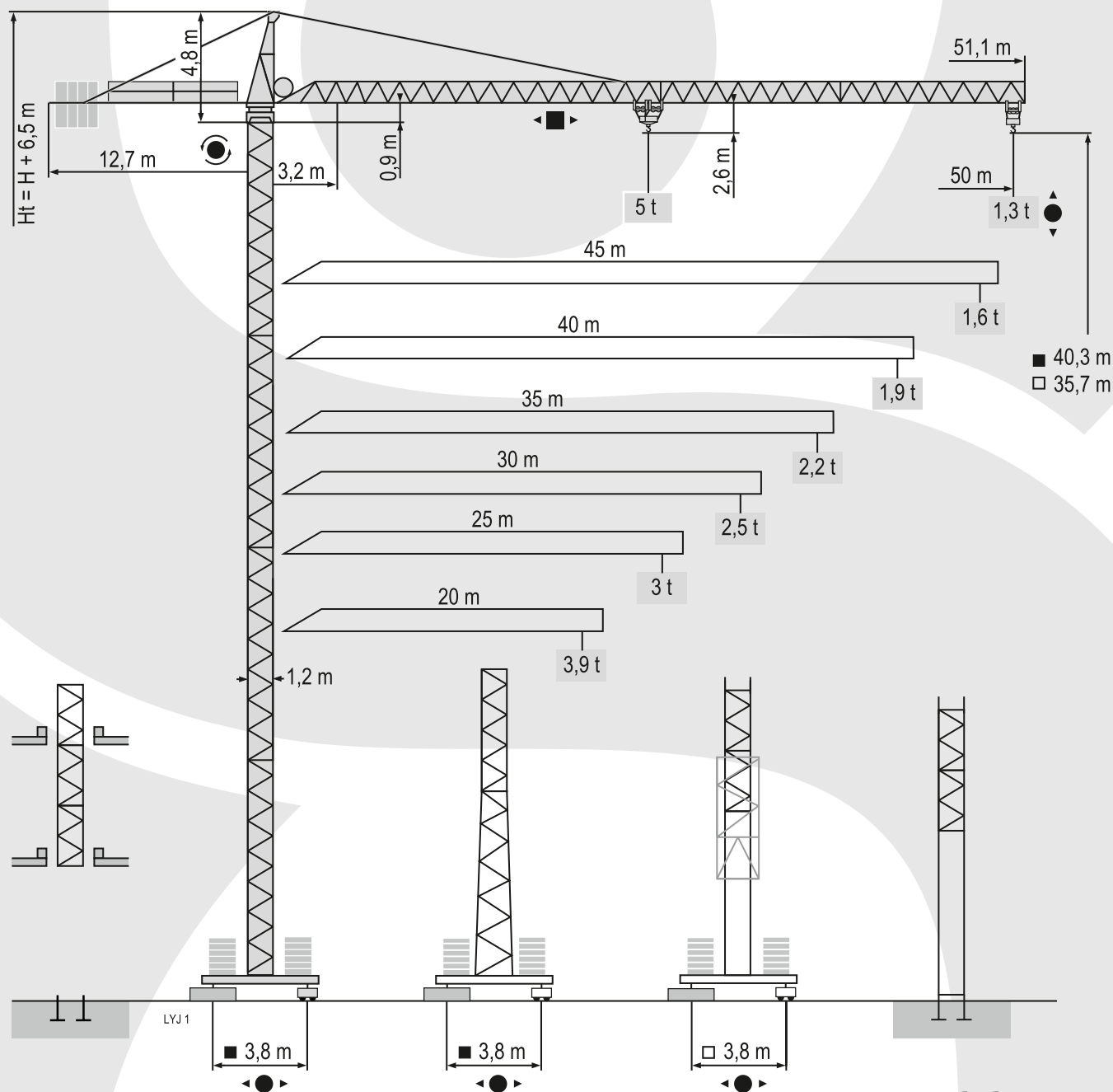


POTAIN MC 85 B

UDŹWIG MAKSYMALNY 5 TON

 **HERKULES**



 FEM 1.001-A3

DANE TECHNICZNE:

UDŹWIG MAKSYMALNY: 5 TON

DŁUGOŚĆ WYSIĘGIKA: 50 M

UDŹWIG NA MAKSYMALNYM WYSIĘGIKU: 1,3 TONY

 **HERKULES**

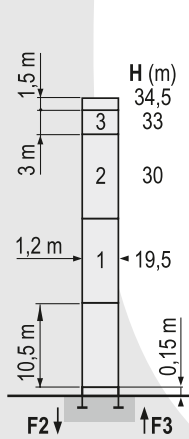
www.herkules-polska.pl

POTAIN MC 85 B

UDŹWIG MAKSYMALNY 5 TON

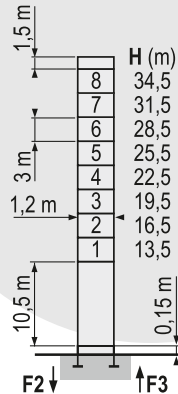


Konfiguracja Wieży



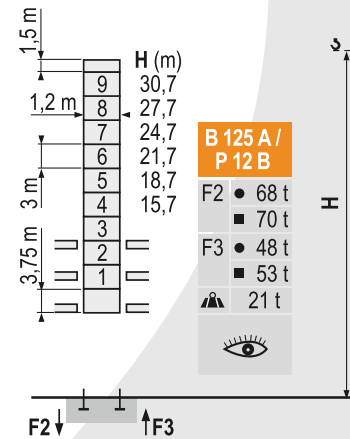
P 12 C	
F2	● 76 t
	■ 91 t
F3	● 56 t
	■ 73 t
▲	22 t

Ho | 36 m



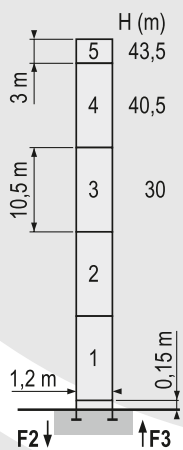
P 12 C	
F2	● 76 t
	■ 91 t
F3	● 56 t
	■ 73 t
▲	22 t

Ho | 34,5 m



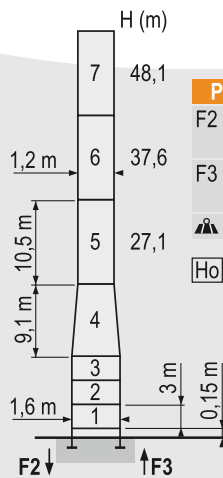
B 125 A / P 12 B	
F2	● 68 t
	■ 70 t
F3	● 48 t
	■ 53 t
▲	21 t

Ho | 34,5 m



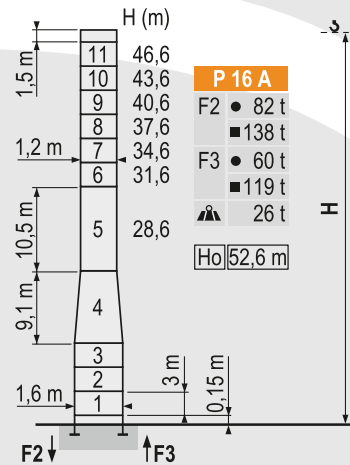
P 12 D	
F2	● 95 t
	■ 147 t
F3	● 74 t
	■ 128 t
▲	24 t

Ho | 45 m



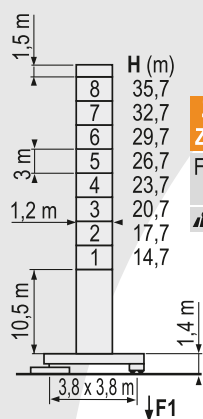
P 16 A	
F2	● 81 t
	■ 126 t
F3	● 59 t
	■ 106 t
▲	27 t

Ho | 54,1 m



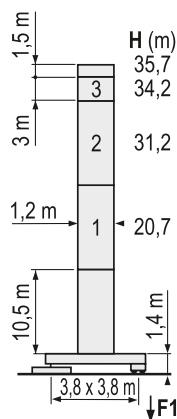
P 16 A	
F2	● 82 t
	■ 138 t
F3	● 60 t
	■ 119 t
▲	26 t

Ho | 52,6 m



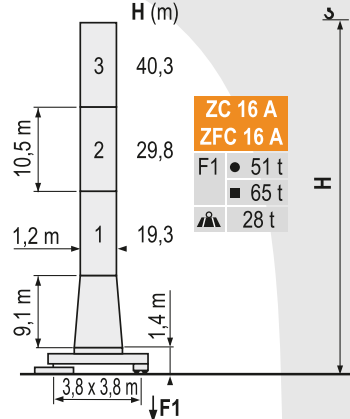
ZF 12 A / ZFC 12 A	
F1	● 44 t
	■ 53 t
▲	27,5 t

Ho | 36 m



ZF 12 A / ZFC 12 A	
F1	● 44 t
	■ 53 t
▲	27,5 t

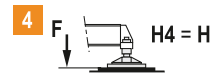
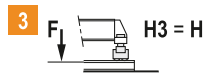
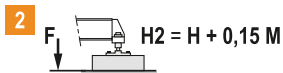
Ho | 36 m



ZC 16 A / ZFC 16 A	
F1	● 51 t
	■ 65 t
▲	28 t

Ho | 36 m

ZF - ZC - ZFC



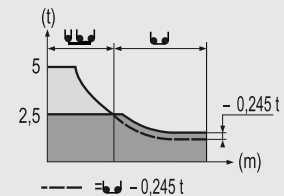
POTAIN MC 85 B

UDŹWIG MAKSYMALNY 5 TON

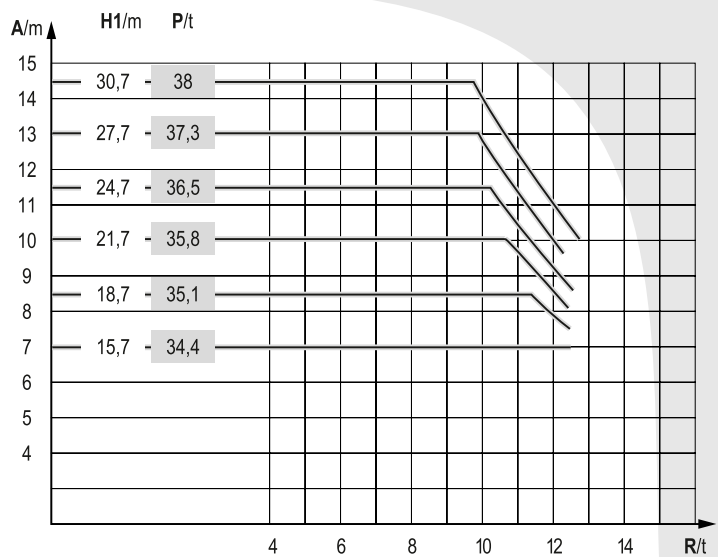
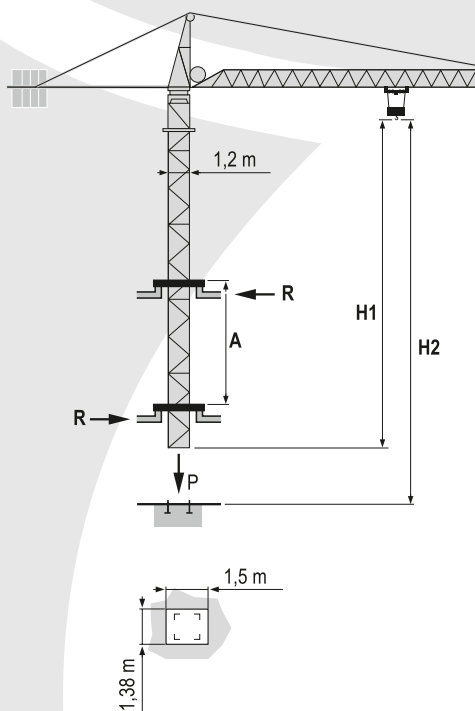


Tabela udźwągów

Wyk. / m	3,2	Wyk. / m										m					
		5	4,3	3,6	3,2	2,7	2,5	2,5	2,4	2,2	2		1,9	1,7	1,6	1,5	1,4
50 m	15	17	20	22	25	26,7	28,9	30	32	35	37	40	42	45	47	50	t
																	t
45 m	16	17	20	22	25	27	28,4	30,8	32	35	37	40	42	45			t
																	t
40 m	16,4	17	20	22	25	27	29,1	31,6	32	35	37	40					t
																	t
35 m	16,4	17	20	22	25	27	29,1	31,6	32	35							t
																	t
30 m	16,3	17	20	22	25	27	30										t
																	t
25 m	16,3	17	20	22	25												t
																	t
20 m	16,3	17	20														t
																	t



B 125 A
















POTAIN MC 85 B

UDŹWIG MAKSYMALNY 5 TON

 **HERKULES**

Mechanizmy

			1			2			ch - PS hp	kW		
												
	15 PC 13-6	m/min	7,2	21,5	43	3,6	11	21,5	15	11	185 m	
		t	2,5	2,5	1,3	5	5	2,6				
	25 PC 13-8	m/min	8,2	33	66	4,1	16,5	33	25	18	323 m	
		t	2,5	2,5	1,3	5	5	2,6				
20 LVF 13	m/min	5 → 28,4 → 52,6 → 69						2,5 → 14,4 → 26,3 → 34,5		20	15	323 m
	t	2,5	2,5	1,3	0,65	5	5	2,6	1,3			
	4 D3 V3	m/min	15 - 30 - 58						4	3		
	RCV 60	tr/min U/min rpm	0 → 0,8						8	6		
	TVD 324	m/min	26						2 x 4	2 x 2,9		
	RT 224	m/min	25						2 x 4	2 x 2,9		
CEI 38  IEC 38			kVA									
400 V (+6% -10%) 50 Hz			15 PC : 30 kVA 25 PC : 35 kVA 20 LVF : 30 kVA									