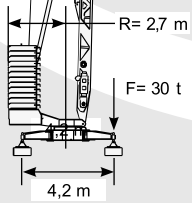
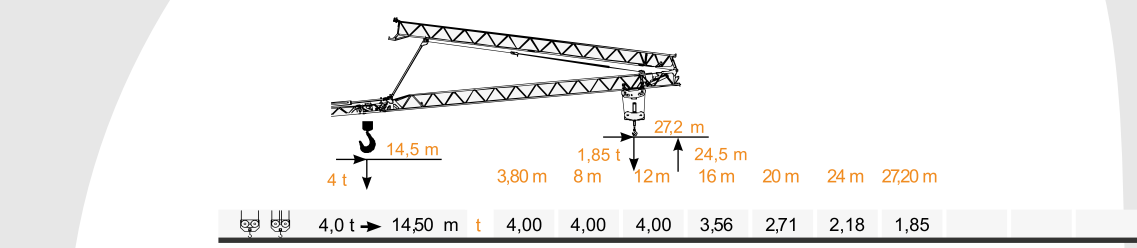
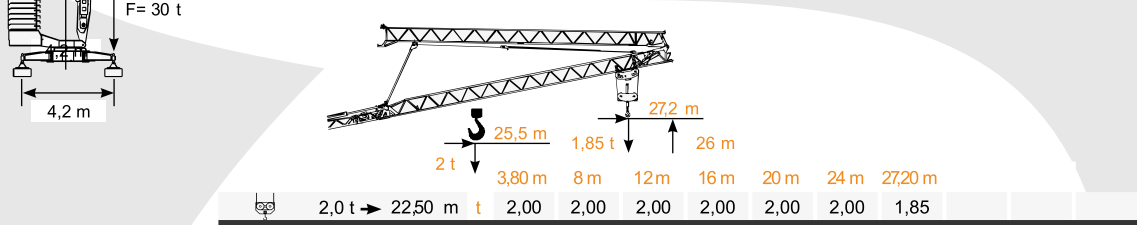
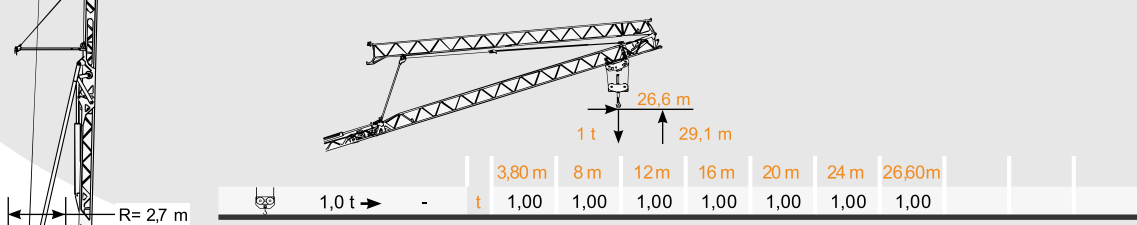
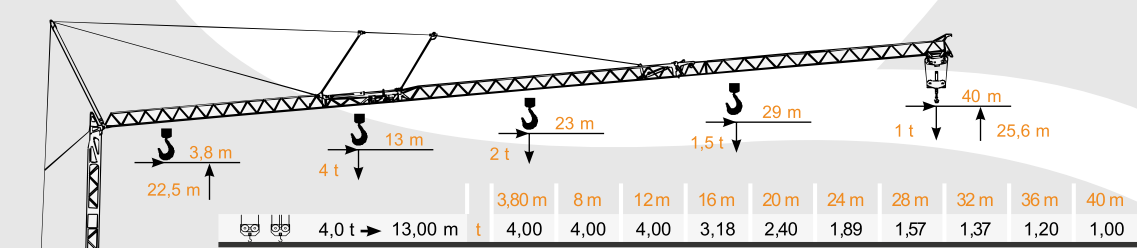
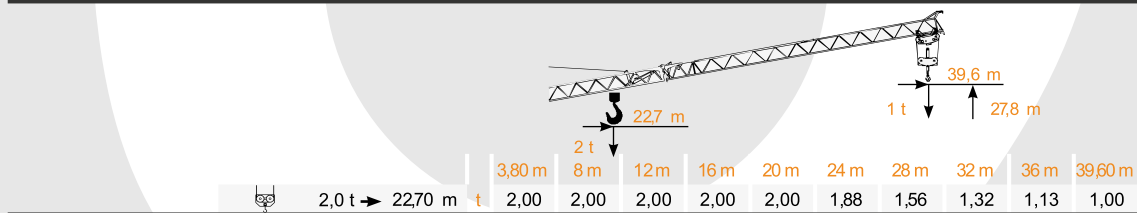
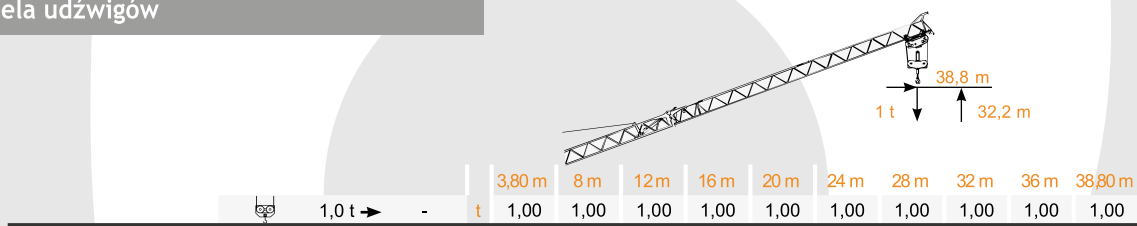


TEREX CBR 40H

UDŹWIG MAKSYMALNY 4 TONY



Tabela udźwignów



DANE TECHNICZNE:
UDŹWIG MAKSYMALNY: 4 TONY

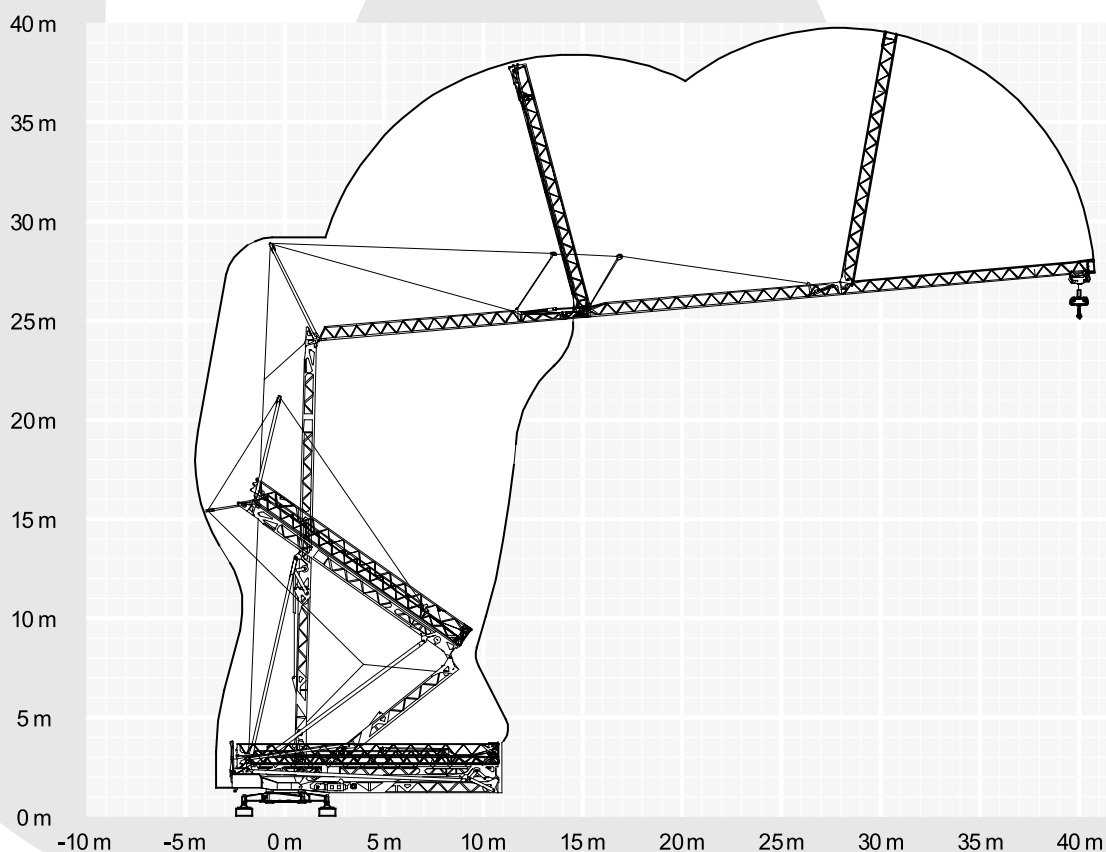
DŁUGOŚĆ WYSIĘGNIKA: 40 M

TEREX CBR 40H

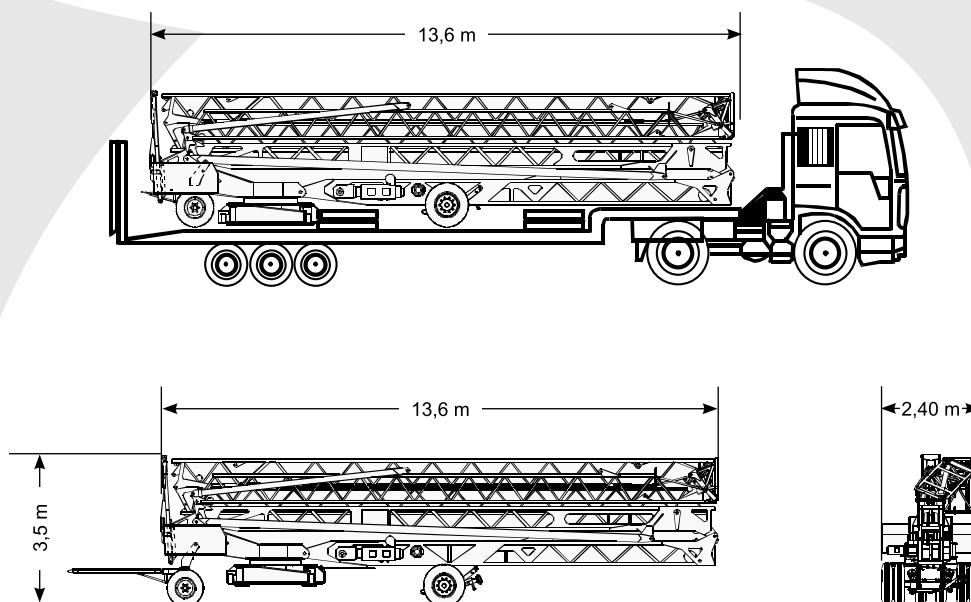
UDŹWIG MAKSYMALNY 4 TONY



Wymiary



Transport








TEREX CBR 40H

UDŹWIG MAKSYMALNY 4 TONY



Mechanizmy

							
		m/min	kg	kW	m/min	kg	kW
Podnoszenie		0 → 6	2000	8,8	0 → 3	4000	8,8
		6 → 23	2000		3 → 11,5	4000	
		23 → 46	1000		11,5 → 23	2000	
Przesuw wózka		0 → 16 → 46		3	0 → 16 → 46		3
Obrót		0 → 0,2 → 0,8 obr / min					60 Nm
Montaż							2,2
Moc wciągarki haka							20 kVA
Zasilanie							400 V - 50 Hz
Kompletny balast							25680 kg
Masa żurawia bez balastu							15400 kg