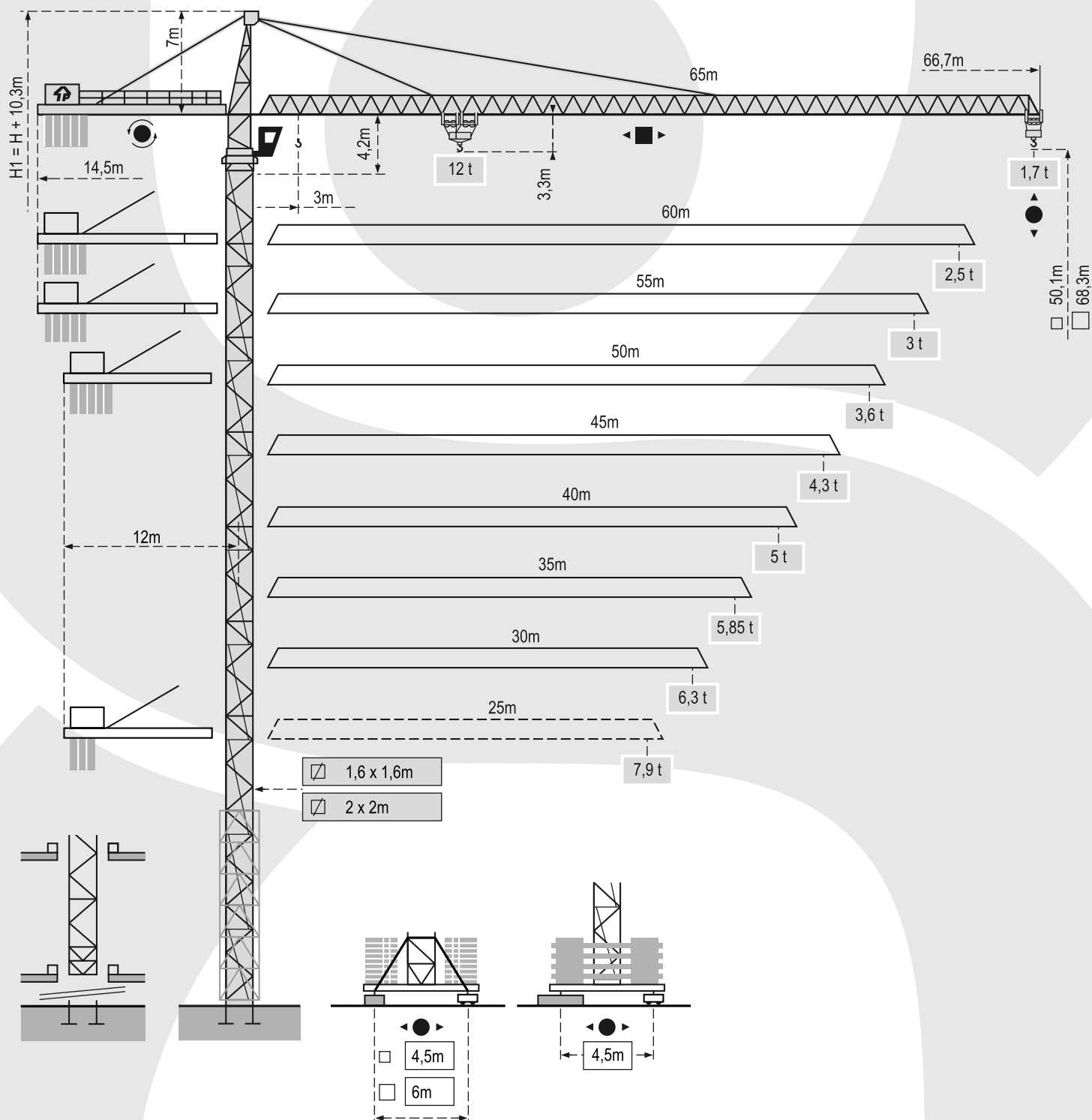


# POTAIN MD 235

UDŹWIG MAKSYMALNY 12 TON

 **HERKULES**



## DANE TECHNICZNE:

UDŹWIG MAKSYMALNY: 12 TON

DŁUGOŚĆ WYSIĘGIKA: 65 M

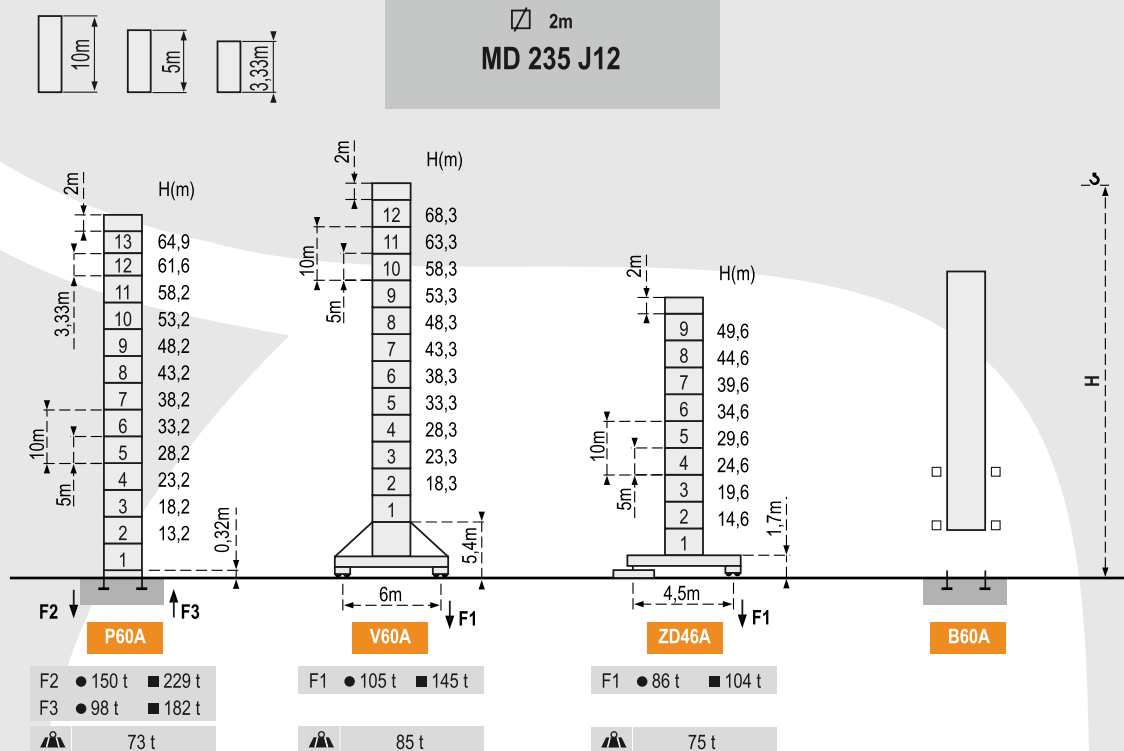
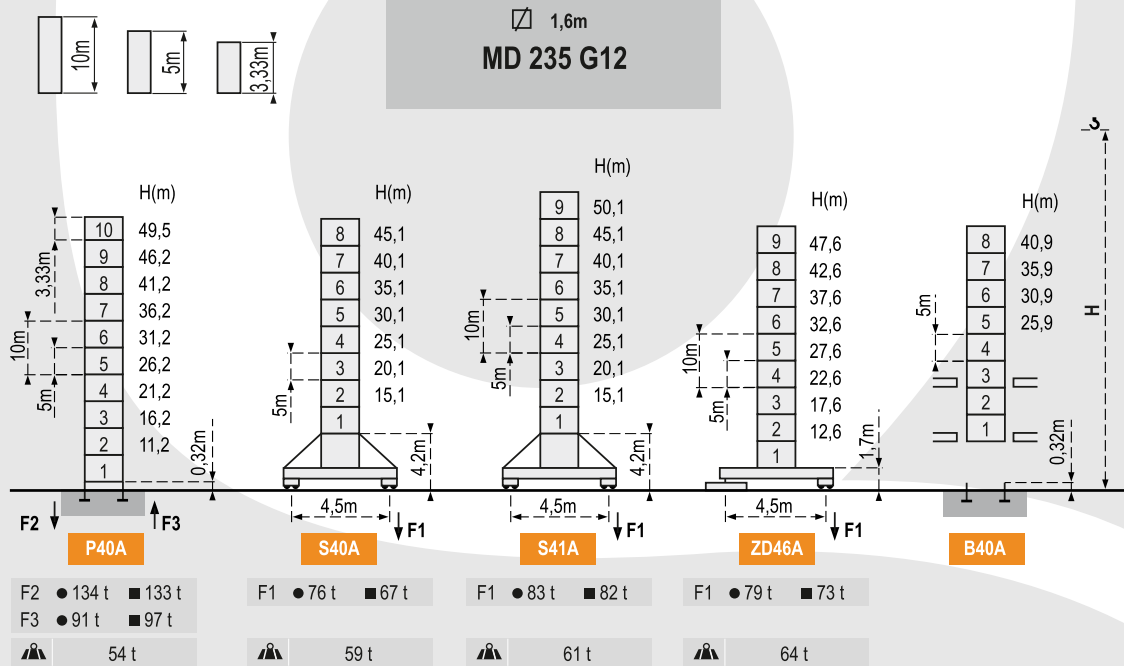
UDŹWIG NA MAKSYMALNYM WYSIĘGIKU: 1,7 TONY

# POTAIN MD 235

UDŹWIG MAKSYMALNY 12 TON



## Konfiguracja Wieży



- W czasie pracy
- Poza pracą
- 👤 Bez ładunku i balastu z maksymalnym wysięgnikiem i wysokością

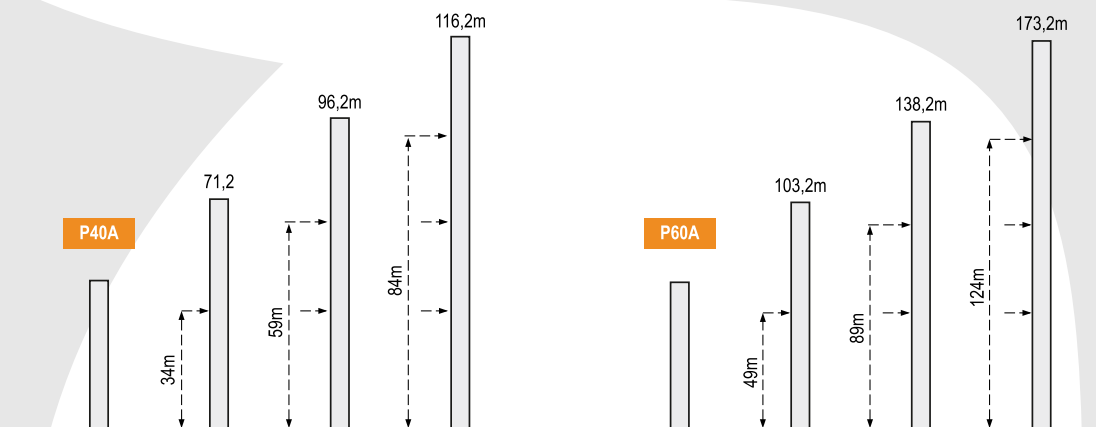
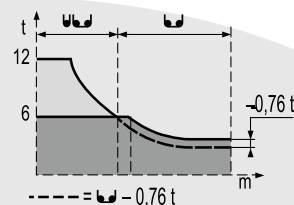
# POTAIN MD 235

UDŹWIG MAKSYMALNY 12 TON



Tabela udźwignięw

65m	127	15	17	20	22,3	24,6	27	30	32	35	37	40	42	45	47	50	52	55	57	60	62	65	t
	12	9,9	8,5	7	6	6	5,4	4,7	4,4	3,9	3,7	3,3	3,1	2,85	2,69	2,47	2,34	2,16	2,06	1,91	1,82	1,7	m
60m	15,3	17	20	22	25	26,9	29,6	32	35	37	40	42	45	47	50	52	55	57	60	t			
	12	10,6	8,7	7,8	6,6	6	6	5,5	4,9	4,6	4,2	4	3,6	3,4	3,2	3	2,8	2,67	2,5	m			
55m	16	20	22	25	27	28,3	31,2	35	37	40	42	45	47	50	52	55	t						
	12	9,3	8,2	7	6,4	6	6	5,2	4,9	4,5	4,2	3,9	3,7	3,4	3,2	3	m						
50m	16,8	20	22	25	27	29,7	32,7	35	37	40	42	45	47	50	t								
	12	9,8	8,7	7,5	6,8	6	6	5,5	5,2	4,7	4,5	4,1	3,9	3,6	m								
45m	17,4	20	22	25	27	30	30,8	33,9	37	40	42	45	t										
	12	10,2	9,1	7,8	7,1	6,2	6	6	5,4	5	4,7	4,3	m										
40m	17,6	20	22	25	27	30	31,1	34,2	37	40	t												
	12	10,3	9,2	7,9	7,2	6,3	6	6	5,5	5	m												
35m	17,6	20	22	25	27	30	31,1	34,2	35	t													
	12	10,3	9,2	7,9	7,2	6,3	6	6	5,85	m													
30m	17,6	20	22	25	27	30	t																
	12	10,3	9,2	7,9	7,2	6,3	m																
25m	17,7	20	22	25	t																		
	12	10,4	9,2	7,9	m																		


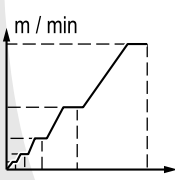

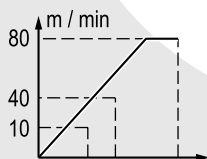

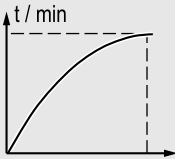








# POTAIN MD 235

UDŹWIG MAKSYMALNY 12 TON

 **HERKULES**

## Mechanizmy

			m/min	t	m/min	t		ch -PS hp	kW
	 12t	<b>55 RCS 30D</b>	0 → 34	6	0 → 17	12	370m	55	40,5
			0 → 68	3	0 → 34	6			
		<b>70 RCS 30D</b>	0 → 40	6	0 → 20	12	461	70	51
			0 → 80	3	0 → 40	6			
	 6 D3 V4			10-40-80			6	4,4	
	 RCV 185			0 → 0,8 tr/min rpm			2x9	2x6,6	
 1,6m 2m	<b>S 40 A</b>  R <sub>z</sub> ≥10m	RT 324	12,5-25			2x7	2x5,2		
		TCV 449 ARC	10 - 50			4x6,8	4x5		
	<b>S 41 A</b>  R <sub>z</sub> ≥10m	RT 443 A1 2V	15 - 30			4x5	4x,37		
		TCV 449 ARC	10 - 50			4x6,8	4x5		
	<b>ZD 46 A</b> 	RT 443 A1 2V	15 - 30			4x5	4x,37		
		RT 544 A1 2V	13,5 - 27			4x7	4x,5,2		
	<b>V 60 A</b>  R <sub>z</sub> ≥13m	TCV 649 ARC	10 - 50			4x6,8	4x5		
		H≤43,3m							
								370V-400V .50Hz	
								55 RCS : 80 KVA	
								70 RCS : 105 KVA	
								*	