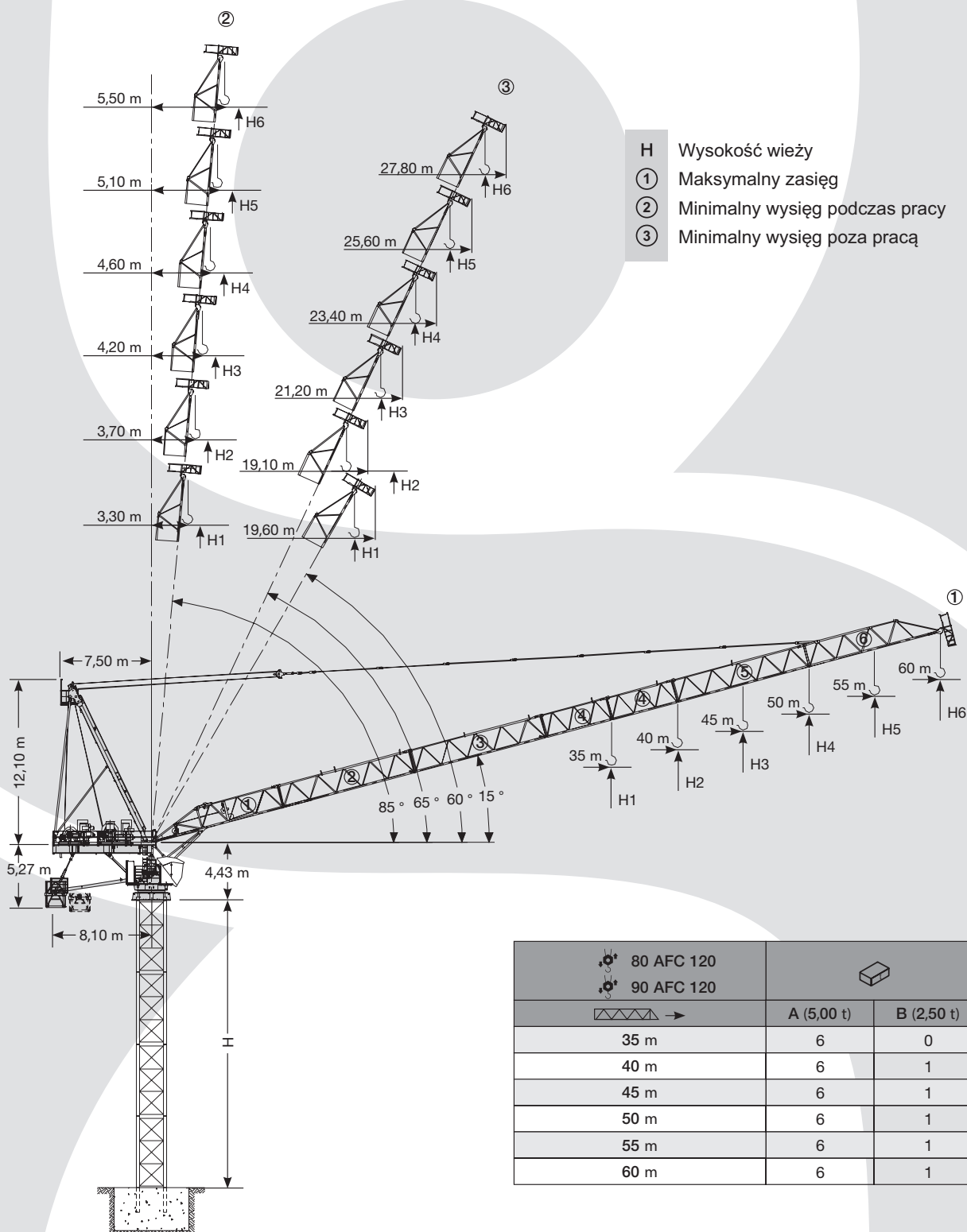


TEREX COMEDIL CTL 340-24

HERKULES

UDŹWIG MAKSYMALNY 24 TONY



DANE TECHNICZNE:

UDŹWIG MAKSYMALNY: 24 TONY

DŁUGOŚĆ WYSIĘGNIKA: 60 M
















UDŹWIG NA MAKSYMALNYM WYSIĘGU: 4 TONY

TEREX COMEDIL CTL 340-24





UDŹWIG MAKSYMALNY 24 TONY

Tabela udźwignięć

				10 m	15 m	20 m	25 m	30 m	35 m	40 m	45 m	50 m	55 m	60 m
	12 t →	21,30 m	t	12,00	12,00	12,00	10,18	8,42	7,15	6,21	5,47	4,88	4,40	4,00
	12 t →	24,40 m	t	12,00	12,00	12,00	11,72	9,70	8,25	7,17	6,32	5,65	5,10	
	18 t →	16,30 m	t	18,00	18,00	14,57	11,53	9,50	8,06	6,97	6,12	5,45	4,90	
	12 t →	27,40 m	t	12,00	12,00	12,00	12,00	10,94	9,32	8,10	7,15	6,40		
	18 t →	18,10 m	t	18,00	18,00	16,26	12,84	10,56	8,93	7,71	6,76	6,00	*	
	24 t →	13,70 m	t	24,00	21,96	16,26	12,84	10,56	8,93	7,71	6,76	6,00		
	12 t →	29,40 m	t	12,00	12,00	12,00	12,00	11,76	10,02	8,71	7,70			
	18 t →	19,40 m	t	18,00	18,00	17,47	13,81	11,37	9,62	8,31	7,30	*		
	24 t →	14,70 m	t	24,00	23,58	17,47	13,81	11,37	9,62	8,31	7,30			
	12 t →	30,90 m	t	12,00	12,00	12,00	12,00	12,00	10,57	9,20				
	18 t →	20,40 m	t	18,00	18,00	18,00	14,58	12,01	10,17	8,80	*			
	24 t →	15,50 m	t	24,00	24,00	18,44	14,58	12,01	10,17	8,80				
	12 t →	31,00 m	t	12,00	12,00	12,00	12,00	12,00	10,80					
	18 t →	20,80 m	t	18,00	18,00	18,00	14,89	12,27	10,40	*				
	24 t →	15,80 m	t	24,00	24,00	18,83	14,89	12,27	10,40					

* = + 200 kg [ -  50 m - 45 m - 40 m - 35 m]

Konfiguracja wysięgnika i wieży

 →	
35 m	1 + 2 + 4 + 6
40 m	1 + 2 + 3 + 6
45 m	1 + 2 + 3 + 4 + 6
50 m	1 + 2 + 3 + 5 + 6
55 m	1 + 2 + 3 + 4 + 5 + 6
60 m	1 + 2 + 3 + 4 + 4 + 5 + 6

	H		
	①	②	③
H1	H + 10,30 m	H + 34,90 m	H + 30,20 m
H2	H + 11,70 m	H + 40,10 m	H + 36,40 m
H3	H + 13,00 m	H + 45,30 m	H + 41,10 m
H4	H + 14,40 m	H + 50,40 m	H + 45,70 m
H5	H + 15,70 m	H + 55,60 m	H + 50,40 m
H6	H + 17,00 m	H + 60,70 m	H + 55,10 m

TEREX COMEDIL CTL 340-24

UDŹWIG MAKSYMALNY 24 TONY



Konfiguracja wieży

HD23

Wieża: HD23 & Podstawa: FP1

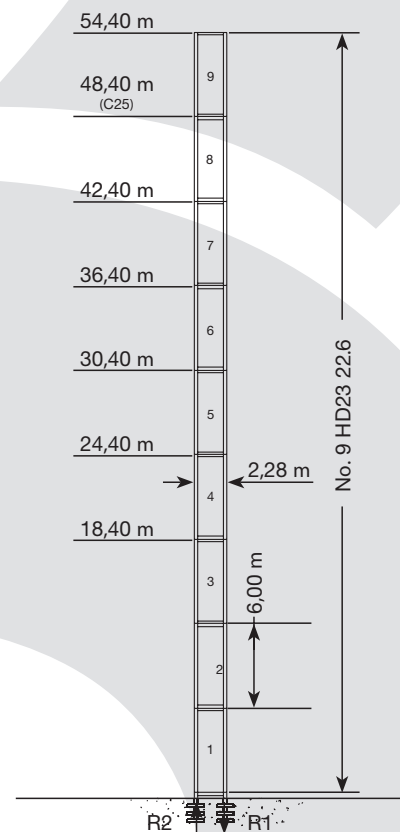
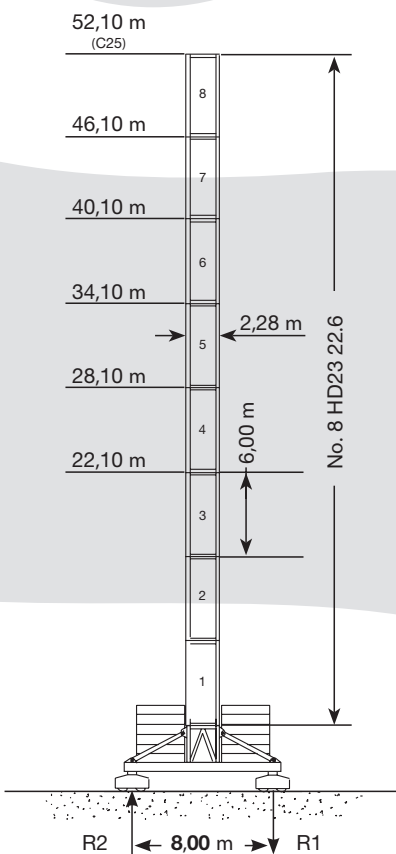
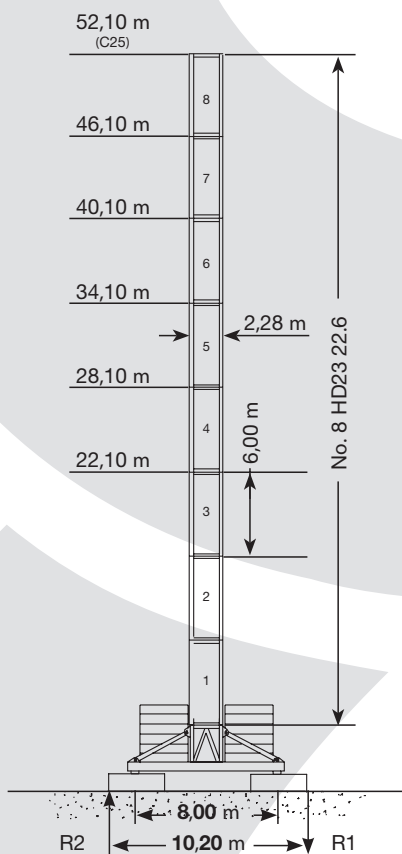
	●	◆
R1	- 1450 kN	- 1850 kN
R2	0 kN	0 kN
	1050 kN	

Wieża: HD23 & Podstawa: T1

	●	◆
R1	-1360 kN	-1820 kN
R2	0 kN	0 kN
	1050 kN	

Wieża: HD23 & Podstawa: R2

	●	◆
R1	-2600 kN	-4080 kN
R2	1850 kN	3480 kN
	900 kN	



→	max. H (m)	
	FEM 1005 C25	FEM 1001
35 m	52,10	52,10
40 m	46,10	52,10
45 m	46,10	52,10
50 m	46,10	46,10
55 m	40,10	46,10
60 m	40,10	40,10

→	max. H (m)	
	FEM 1005 C25	FEM 1001
35 m	52,10	52,10
40 m	46,10	52,10
45 m	46,10	52,10
50 m	46,10	46,10
55 m	40,10	46,10
60 m	40,10	40,10

→	max. H (m)	
	FEM 1005 C25	FEM 1001
35 m	48,40	54,40
40 m	48,40	54,40
45 m	48,40	48,40
50 m	42,40	48,40
55 m	42,40	42,40
60 m	42,40	42,40

TEREX COMEDIL CTL 340-24

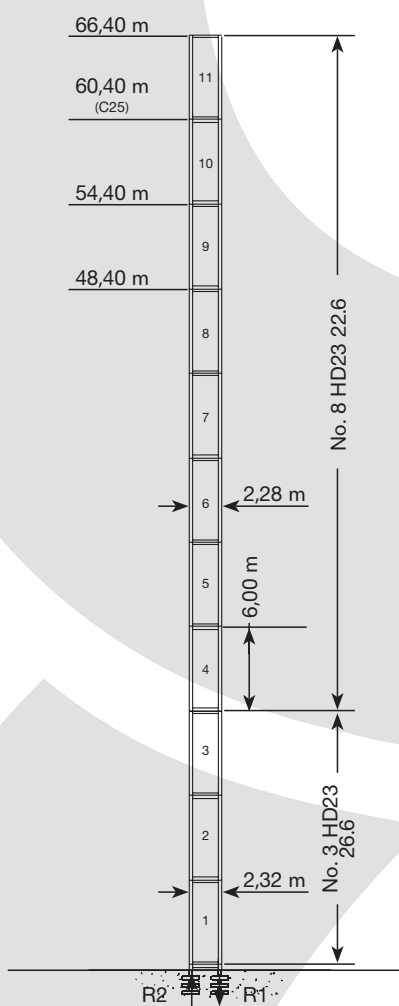
UDŹWIG MAKSYMALNY 24 TONY

HERKULES

Konfiguracja wieży

Wieża: HD23 & Podstawa: R3

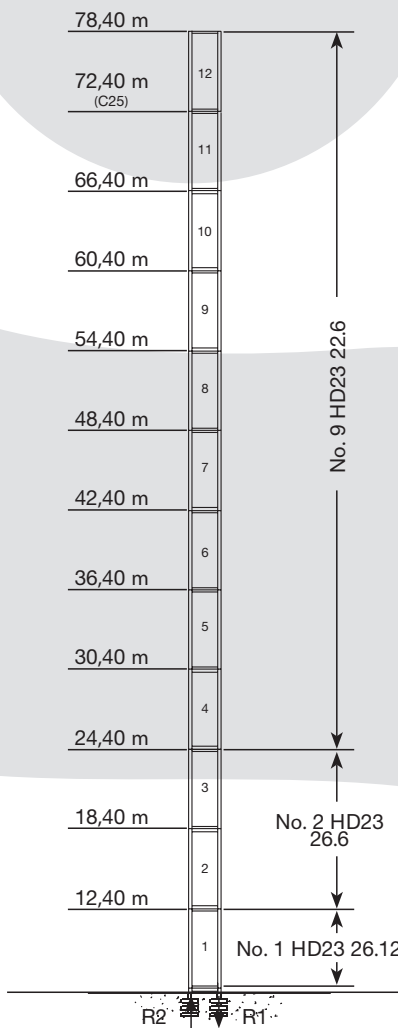
	●	◆
R1	-3000 kN	-5100 kN
R2	2180 kN	4400 kN
	1050 kN	



→	max. H (m)	
	FEM 1005 C25	FEM 1001
35 m	60,40	66,40
40 m	60,40	66,40
45 m	54,40	60,40
50 m	54,40	60,40
55 m	54,40	54,40
60 m	48,40	54,40

Wieża: HD23 & Podstawa: R4

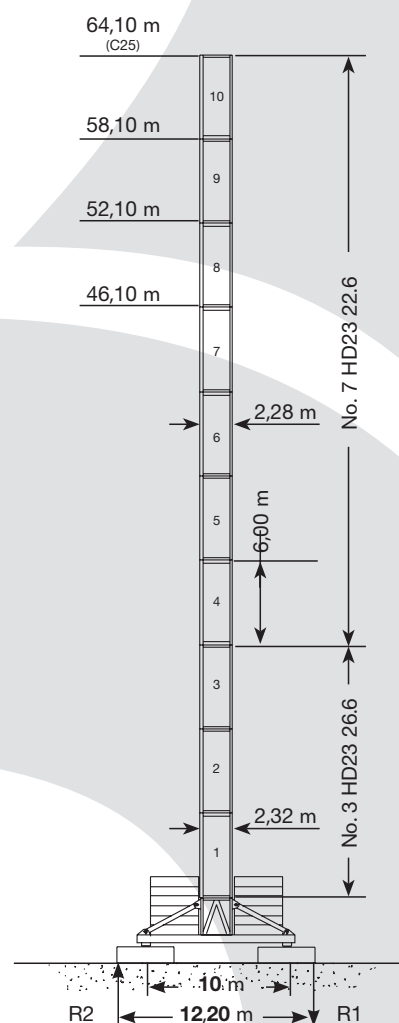
	●	◆
R1	-3513 kN	-6462 kN
R2	2578 kN	5745 kN
	1190 kN	



→	max. H (m)	
	FEM 1005 C25	FEM 1001
35 m	72,40	78,40
40 m	66,40	78,40
45 m	66,40	72,40
50 m	66,40	72,40
55 m	60,40	66,40
60 m	60,40	66,40

Wieża: HD23 & Podstawa: FP3

	●	◆
R1	- 1500 kN	-2014 kN
R2	0 kN	0 kN
	1300 kN	








→	max. H (m)	
	FEM 1005 C25	FEM 1001
35 m	64,10	64,10
40 m	58,10	64,10
45 m	58,10	64,10
50 m	58,10	58,10
55 m	52,10	58,10
60 m	52,10	52,10








TEREX COMEDIL CTL 340-24

UDŹWIG MAKSYMALNY 24 TONY

 **HERKULES**

Mechanizmy

			
 90 AFC 120 - LFC 67	210 kVA*	400V - 50Hz / 460V - 60Hz	2000/14/CE zmodyfikowany
 80 AFC 120 - LFC 67	199 kVA*	400V - 50Hz / 460V - 60Hz	2000/14/CE zmodyfikowany

		t	m/min	kW	długość liny	
	80 AFC 120 R00 80 AFC 120 R01 (vector)		12	0 → 31	80	640 m
			9	0 → 38		
			6	0 → 52		
			3	0 → 93		
			2	0 → 109		
			18	0 → 21		
			13,5	0 → 25		
			9	0 → 35		
			4,5	0 → 62		
			3	0 → 73		
			24	0 → 16	90	1030 m
			18	0 → 19		
			12	0 → 26		
			6	0 → 47		
			4	0 → 55		
			12	0 → 32		
90 AFC 120 R00 90 AFC 120 R01 (vector)		9	0 → 41	90	1030 m	
		6	0 → 58			
		3	0 → 103			
		2,1	0 → 130			
		18	0 → 21			
		13,5	0 → 27			
		9	0 → 39			
		4,5	0 → 69			
		3,15	0 → 87			
			24			0 → 16
			18			0 → 20
			12			0 → 29
			6			0 → 51
			4,2			0 → 65



Podnoszenie



Dyrektywa odnośnie poziomu akustycznego



Całkowita moc zainstalowana



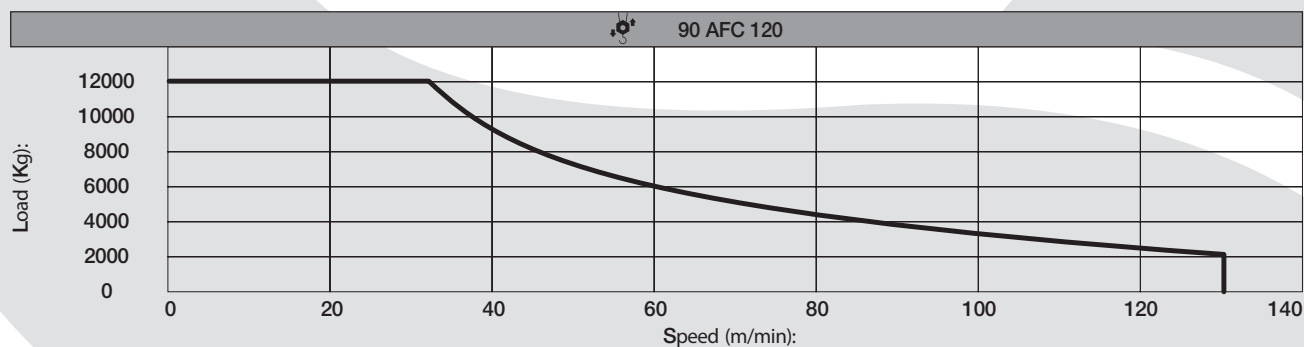
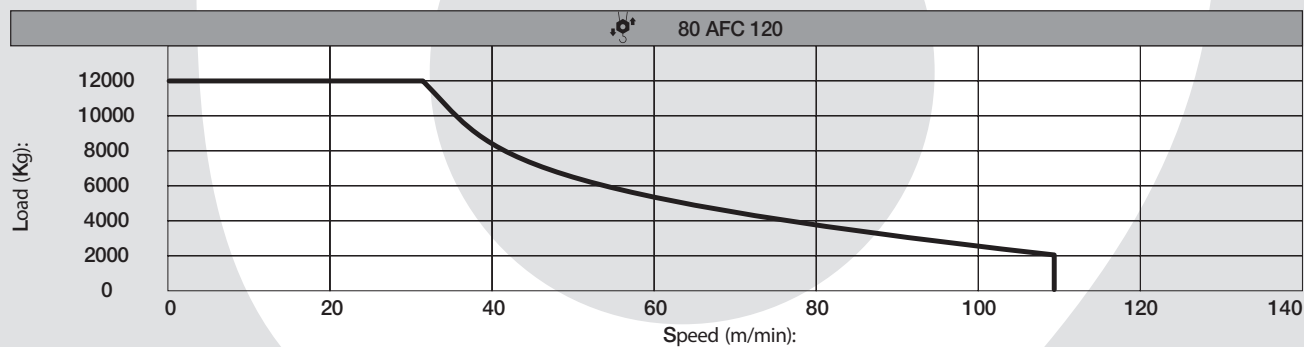
Zasilanie

TEREX COMEDIL CTL 340-24

HERKULES

UDŹWIG MAKSYMALNY 24 TONY

Mechanizmy



HD23 - TS23

	LFC 67 (vector)	1,9 min	67 kW
	RCC 2 2 112L	0 → 0,75 r.p.m.	2 x 15 kW

HD23

	TSR 2RG 4M8	12 → 24 m/min	4 x 80 Nm
	TSR 4RG 4M8	14 → 28 m/min	4 x 80 Nm
	i		

Tower height max.

	HD23	T1	T3
	TSR 2RG 4M8	52,10 m	52,10 m
	TSR 4RG 4M8	52,10 m	64,10 m

- Nakierowanie wysięgnika
- Obrót
- Jazda