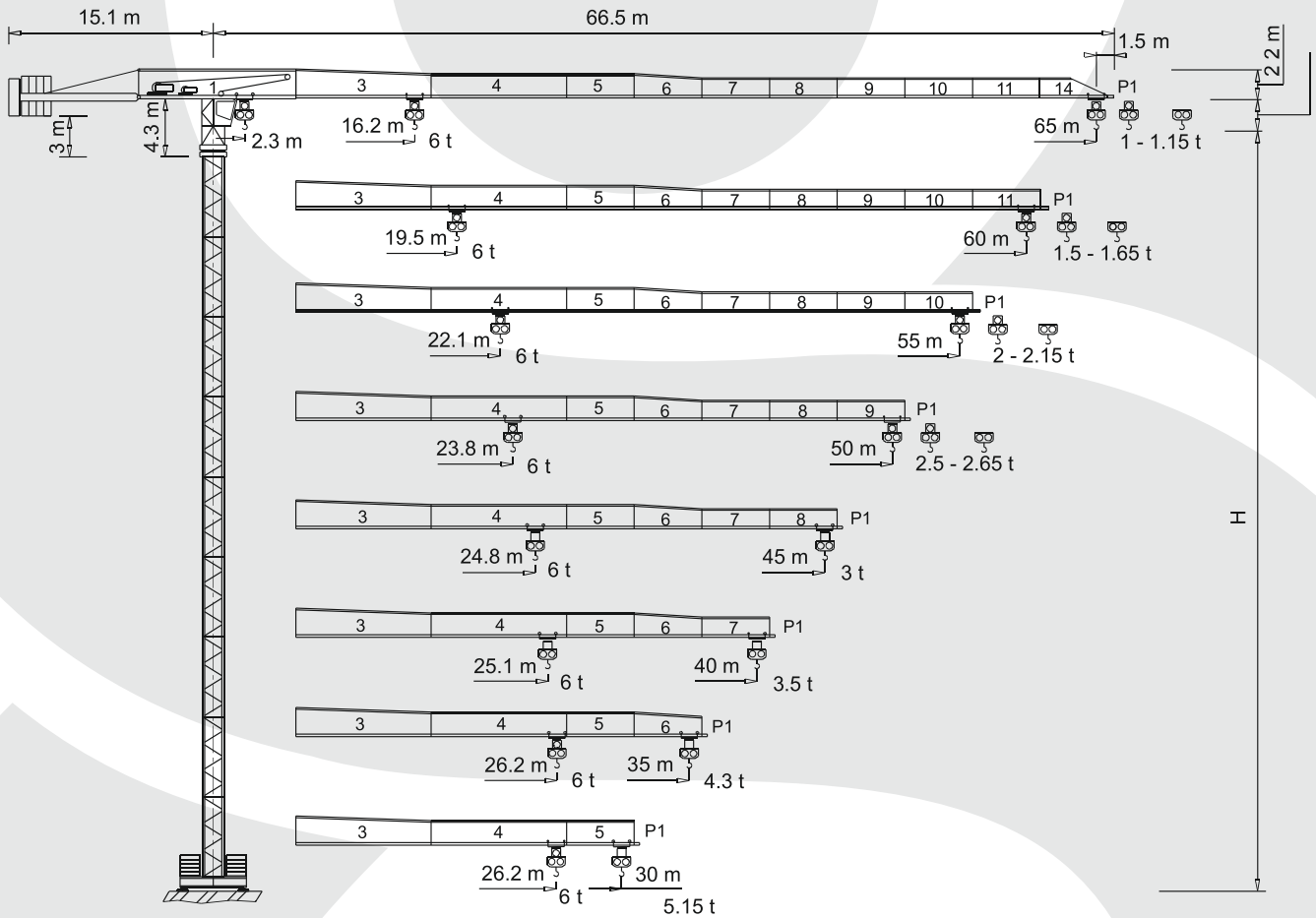


TEREX CTT 141/A-6

MAXIMUM CAPACITY: 6 TONS



TECHNICAL DATA:

MAXIMUM LOAD: 6 TONS

JIB LENGTH: 65 m

MAXIMUM CAPACITY: 1,0 T

TEREX CTT 141/A-6

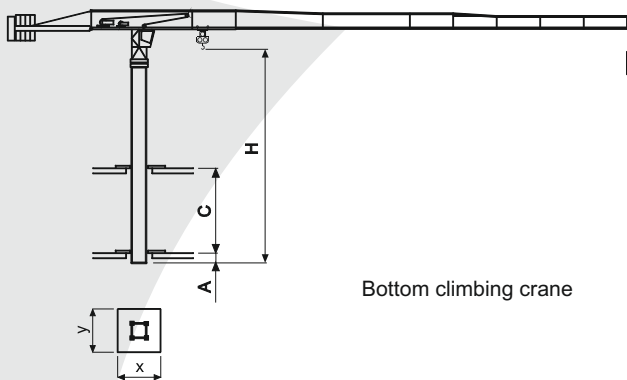
MAXIMUM CAPACITY: 6 TONS



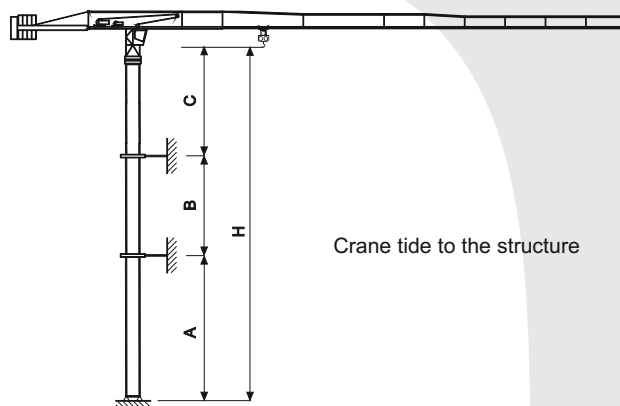
Load diagram

		m											
		10	15	20	25	30	35	40	45	50	55	60	65
	3 t	3	3	3	3	3	2.55	2.17	1.87	1.64	1.44	1.28	1.15
	3 t	3	3	3	3	2.89	2.39	2.01	1.71	1.48	1.29	1.13	1
	6 t	6	6	4.70	3.61	2.89	2.39	2.01	1.71	1.48	1.29	1.13	1
	3 t	3	3	3	3	3	3	2.72	2.36	2.08	1.84	1.65	
	3 t	3	3	3	3	3	3	2.56	2.21	1.92	1.69	1.5	
	6 t	6	6	5.83	4.51	3.64	3.02	2.56	2.21	1.92	1.69	1.5	
	3 t	3	3	3	3	3	3	3	2.74	2.41	2.15		
	3 t	3	3	3	3	3	3	2.99	2.58	2.26	2		
	6 t	6	6	6	5.2	4.21	3.51	2.99	2.58	2.26	2		
	3 t	3	3	3	3	3	3	3	3	2.65			
	3 t	3	3	3	3	3	3	3	2.85	2.5			
	6 t	6	6	6	5.68	4.61	3.85	3.29	2.85	2.5			
	3 t	3	3	3	3	3	3	3	3				
	6 t	6	6	6	5.96	4.84	4.05	3.46	3				
	3 t	3	3	3	3	3	3	3					
	6 t	6	6	6	6	4.9	4.1	3.5					
	3 t	3	3	3	3	3	3						
	6 t	6	6	6	6	5.14	4.3						
	3 t	3	3	3	3	3							
	6 t	6	6	6	6	5.15							

Other configuration



Bottom climbing crane



Crane tied to the structure

consult us

	TS16 R ₁	TS21 R ₃
	m	
A min/max	30/40	30/45
B min/max	17.7/23.6	
C max	26	35
H max	❗	

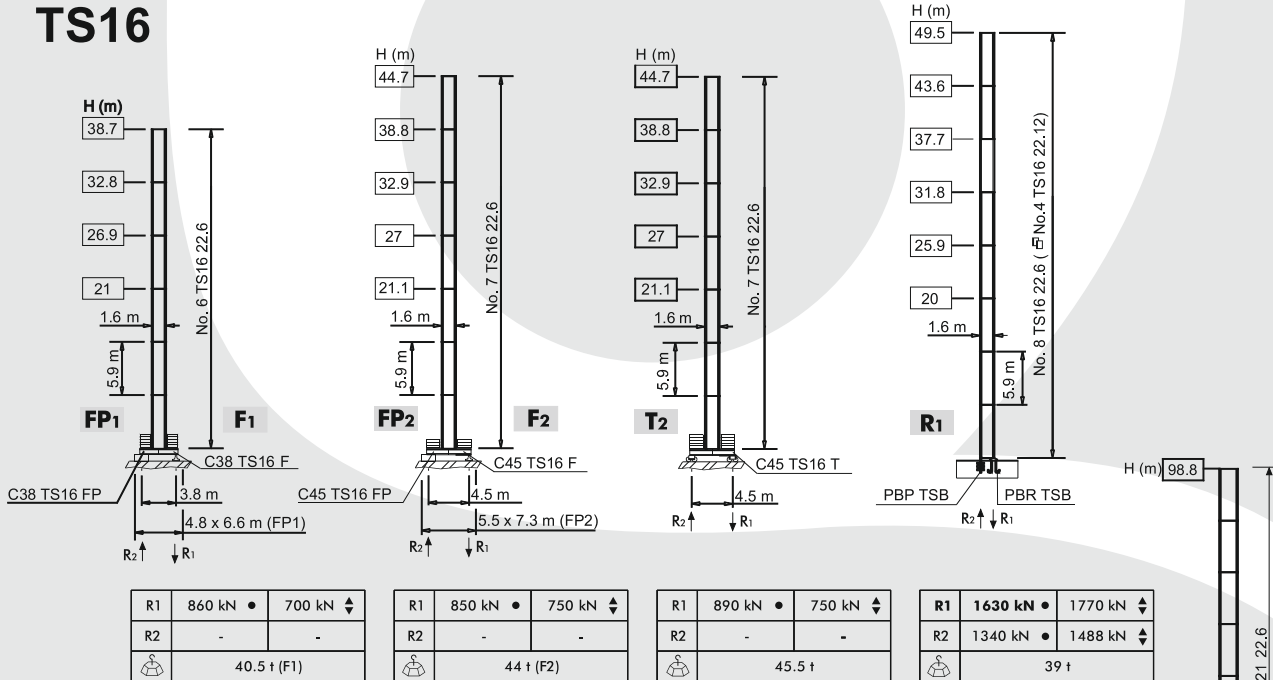
TEREX CTT 141/A-6

MAXIMUM CAPACITY: 6 TONS

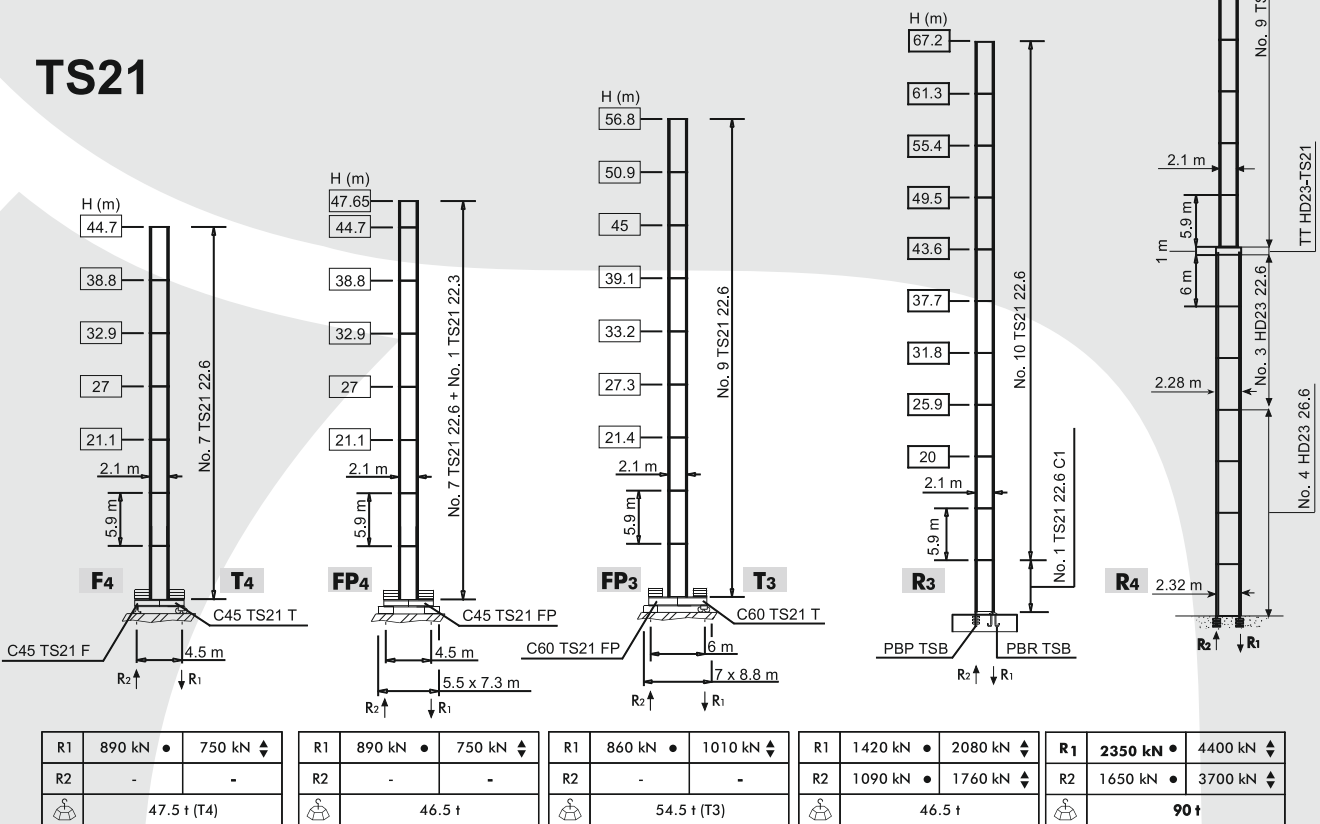


Tower configuration

TS16



TS21



- H max. hook height
- in service
- ◄ out of service
- ⚖ weight of crane (without ballast)
- max. jib, max. height

TEREX CTT 141/A-6

MAXIMUM CAPACITY: 6 TONS



Mechanisms

		€	⚡	👂
🔧	18 APC 30	56 * kVA	400 V - 50 Hz	2000/14/CE
	22 AFC 30	62 * kVA	400 V - 50 Hz / 460 V - 60 Hz	

* Crane without travelling equipment

			m/min	†	kW	rope length (m)
🔧	18 APC 30 D1 F11	👁	7	3	18	220 m
			30	3		
			59	1.5		
		👁	3.5	6		
			15	6		
			29.5	3		
	22 AFC 30 D1 F11 22 AFC 30 D1 F11 LB (VARIANT)	👁	0 → 2.4	3	22	300 m (D1 F11) 380 m (D1 F11 LB)
			2.4 → 9	3		
			9 → 38	3		
			38 → 61	1.88		
		👁	61 → 77	1.43		
			0 → 1.2	6		
			1.2 → 4.5	6		
			4.5 → 19	6		
		19 → 30.5	3.76			
		30.5 → 38.5	2.86			

🔧	DVF 3 5 D1 (VARIANT)	0 → 6 → 32 → 64 m/min	5 kW
⚙	SSR 2 2 65	0.7 obr/min (50 Hz) 0.84 obr/min (60 Hz)	2 × 65 Nm
🚞	▲ TAD 2RP 2M4	0 → 24 m/min	2 × 4 kW
	● TAD 2RG 4M3		4 × 3 kW

	▲	●
	Max. H [m]	
T₂-T₄	38.8	> 38.8
T₃	39.1	> 39.1

- 🔧 Trolleying
- 🔧 Hosting
- ⚙ Slewing
- 🚞 Travelling
- 👂 Directive on noise level
- € Power requirements
- ⚡ Power supply