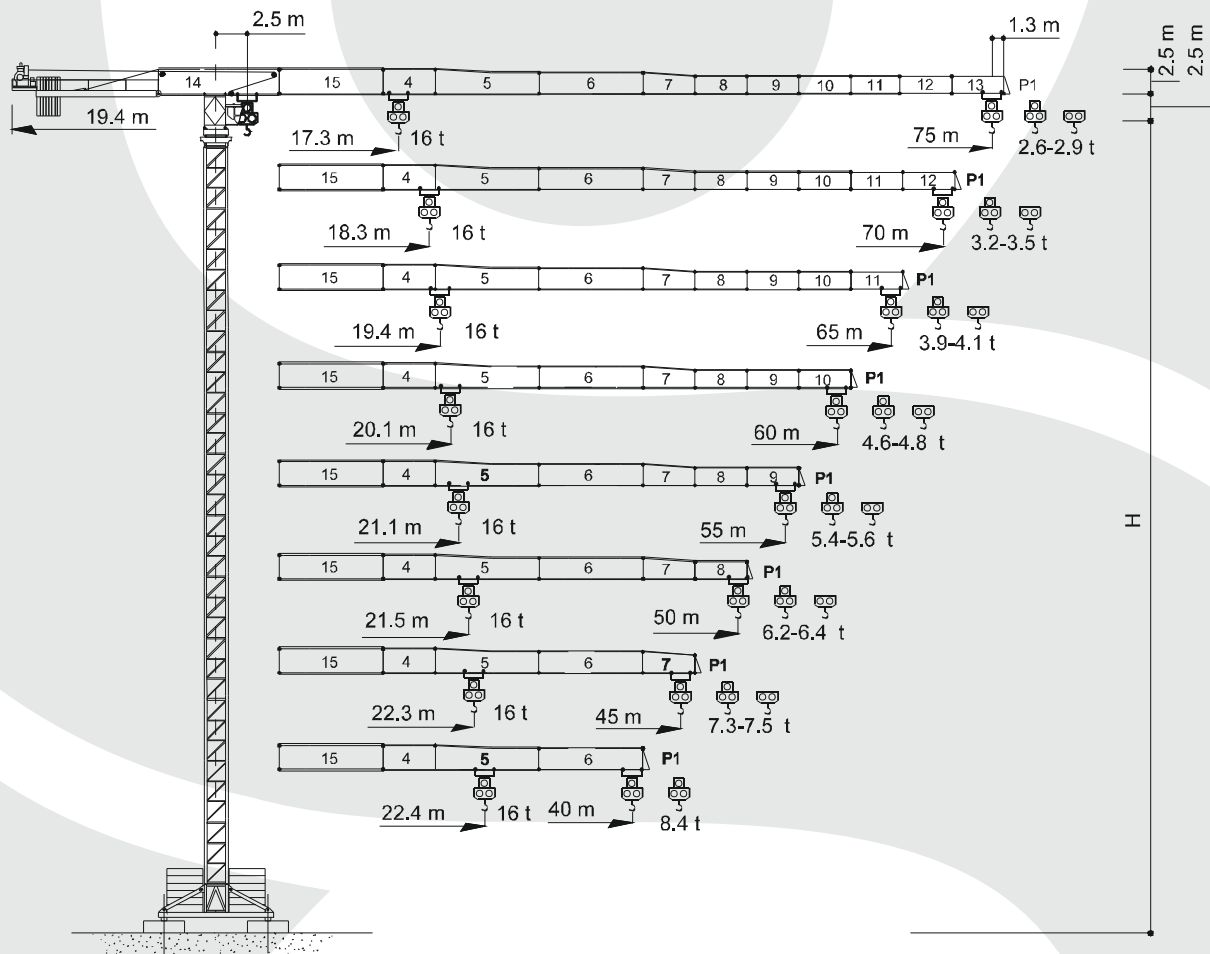


# TEREX CTT 331-16

MAXIMUM CAPACITY: 16 TONS



## TECHNICAL DATA:

MAXIMUM LOAD: 16 TONS

JIB LENGTH: 75 m

LOAD ON MAXIMUM RADIUS: 2,60 T



[www.herkules-polska.pl](http://www.herkules-polska.pl)

# TEREX CTT 331-16

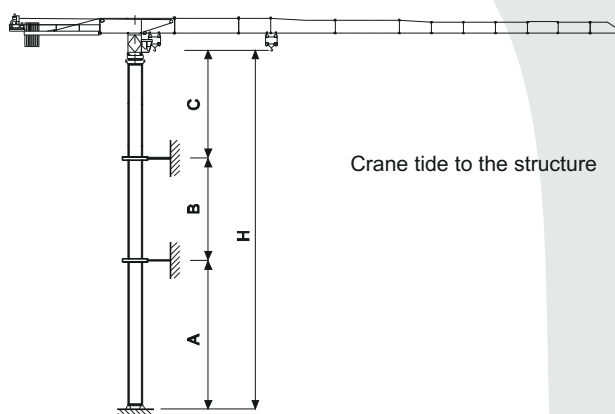
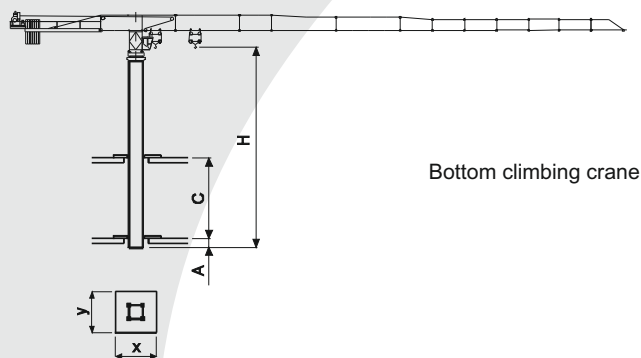
## MAXIMUM CAPACITY: 16 TONS



### Load diagram

		m	10	15	20	25	30	35	40	45	50	52	55	57	60	62	65	67	70	72	75
8 t	- 32,1 m	t	8	8	8	8	8	7,24	6,21	5,42	4,78	4,57	4,27	4,09	3,84	3,69	3,48	3,35	3,17	3,06	2,90
8 t	- 31,5 m	t	8	8	8	8	8	7,06	6	5,19	4,53	4,31	4,00	3,82	3,56	3,41	3,19	3,06	2,87	2,76	2,60
16 t	- 17,3 m	t	16	16	13,54	10,48	8,48	7,06	6	5,19	4,53	4,31	4,00	3,82	3,56	3,41	3,19	3,06	2,87	2,76	2,60
8 t	- 34,5 m	t	8	8	8	8	8	7,86	6,76	5,91	5,23	5,00	4,68	4,48	4,22	4,06	3,83	3,69	3,50		
8 t	- 33,6 m	t	8	8	8	8	8	7,61	6,50	5,64	4,95	4,71	4,39	4,20	3,93	3,76	3,54	3,40	3,20		
16 t	- 18,3 m	t	16	16	14,46	11,23	9,11	7,61	6,50	5,64	4,95	4,71	4,39	4,20	3,93	3,76	3,54	3,40	3,20		
8 t	- 36,3 m	t	8	8	8	8	8	7,17	6,28	5,57	5,32	4,99	4,78	4,51	4,34	4,10					
8 t	- 35,8 m	t	8	8	8	8	8	7,03	6,12	5,40	5,15	4,81	4,60	4,31	4,14	3,90					
16 t	- 19,4 m	t	16	16	15,44	12,03	9,79	8,21	7,03	6,12	5,40	5,15	4,81	4,60	4,31	4,14	3,90				
8 t	- 38,1 m	t	8	8	8	8	8	7,59	6,65	5,91	5,65	5,30	5,09	4,80							
8 t	- 37,4 m	t	8	8	8	8	8	7,41	6,47	5,72	5,46	5,11	4,89	4,60							
16 t	- 20,1 m	t	16	16	16	12,59	10,27	8,63	7,41	6,47	5,72	5,46	5,11	4,89	4,60						
8 t	- 40 m	t	8	8	8	8	8	8	7,02	6,24	5,97	5,60									
8 t	- 39,2 m	t	8	8	8	8	8	8	7,82	6,83	6,04	5,77	5,40								
16 t	- 21,1 m	t	16	16	16	13,24	10,81	9,10	7,82	6,83	6,04	5,77	5,40								
8 t	- 40,9 m	t	8	8	8	8	8	8	7,20	6,40											
8 t	- 40,1 m	t	8	8	8	8	8	8	7	6,20											
16 t	- 21,5 m	t	16	16	16	13,57	11,08	9,32	8,02	7	6,20										
8 t	- 42,5 m	t	8	8	8	8	8	8	7,50												
8 t	- 41,5 m	t	8	8	8	8	8	8	7,30												
16 t	- 22,3 m	t	16	16	16	14,10	11,53	9,70	8,35	7,30											
8 t	- 40 m	t	8	8	8	8	8	8													
8 t	- 40 m	t	8	8	8	8	8	8													
16 t	- 22,4 m	t	16	16	16	14,19	11,60	9,76	8,40												

### Other configurations



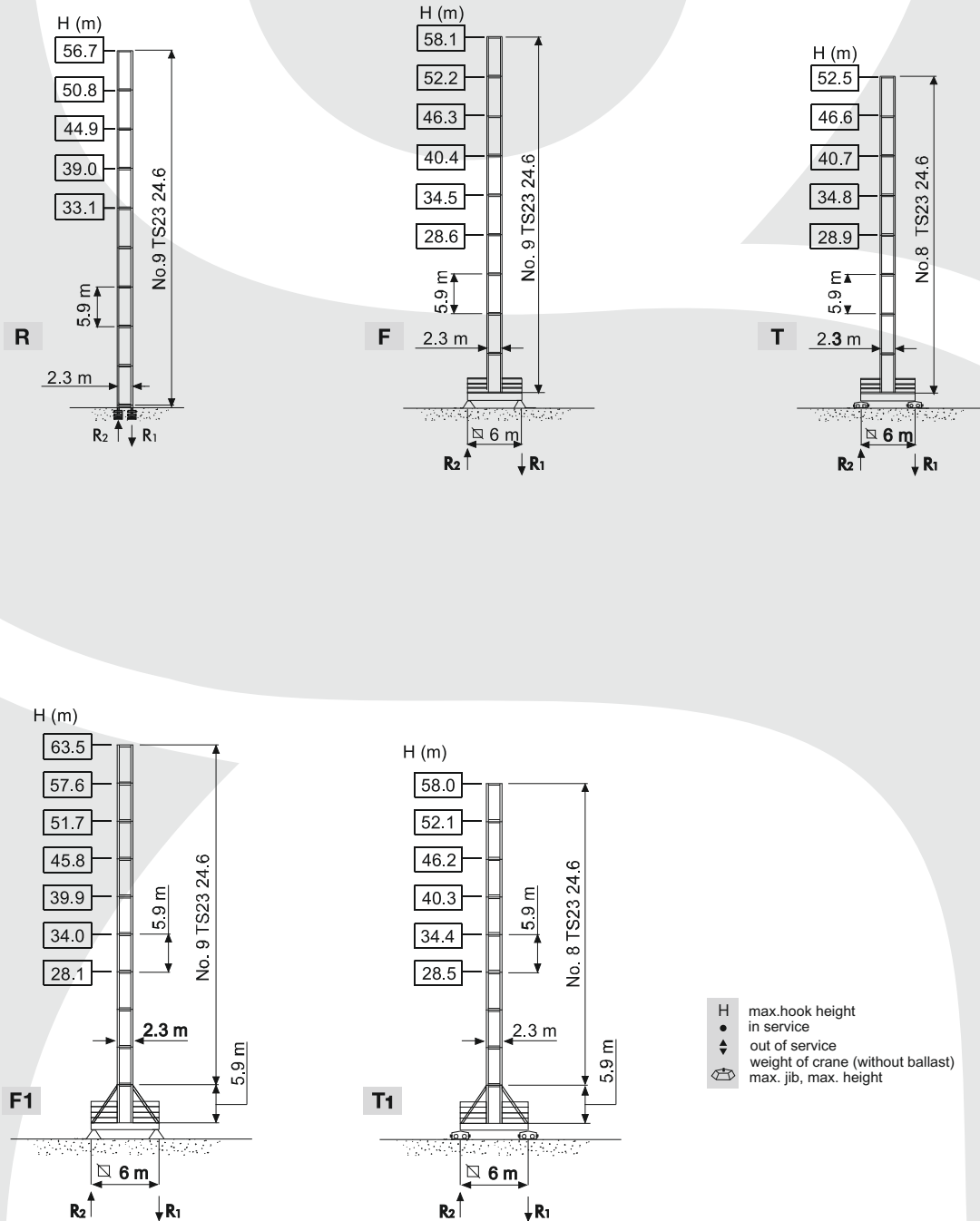
# TEREX CTT 331-16

MAXIMUM CAPACITY: 16 TONS



## Tower configuration

### TS23



# TEREX CTT 331-16

## MAXIMUM CAPACITY: 16 TONS



### Mechanisms

		€	⚡	👂
	45 AFC 80	114* kVA	400 V - 50 Hz / 460 V - 60 Hz	2000/14/CE
	67 AFC 80	138* kVA		

\* Crane without travelling equipment

			m/min	t	kW	rope length (m)				
<b>45 AFC 80</b> <b>45 AFC 80 D<sub>2</sub></b> (VARIANT)			0 → 30	8	45	560 m 850 m (D <sub>2</sub> )				
			0 → 39	6						
			0 → 56	4						
			0 → 97	2						
			0 → 110	1.7						
			0 → 15	16						
			0 → 19.5	12						
			0 → 28	8						
			0 → 48.5	4						
			0 → 55	3.4						
			<b>67 AFC 80</b> <b>67 AFC 80 D<sub>1</sub></b> (VARIANT)				0 → 41	8	67	560 m 850 m (D <sub>2</sub> )
							0 → 53	6		
							0 → 76	4		
							0 → 135	2		
0 → 145	1.85									
0 → 20.5	16									
	0 → 26.5	12								
	0 → 38	8								
	0 → 67.5	4								
	0 → 72.5	3.7								

	<b>DSR 3 70 D2</b>	12→36→72 m/min	70/50 Nm
	<b>DCC 5 112 D2</b>	0 → 95 m/min	11 kW
	<b>SSR 4 4 65</b>	0.73 obr/min	4 x 65 Nm
	■ <b>TVF 2RG 4M9</b>	0 → 24 obr/min	4 x 9 kW
	▲ <b>TSR 2RG 4M8</b>	12 → 24 m/min (50 Hz)	4 x 80 Nm
	● <b>TSR 4RG 4M8</b>	14 → 28 m/min (60 Hz)	

	■	▲	●
	Max. H [m]		
T <sub>1</sub>	52.5	52.5	> 52.5

- Trolleying
- Hoisting
- Slewing
- Travelling
- Directive on noise level
- Power requirements
- Power supply