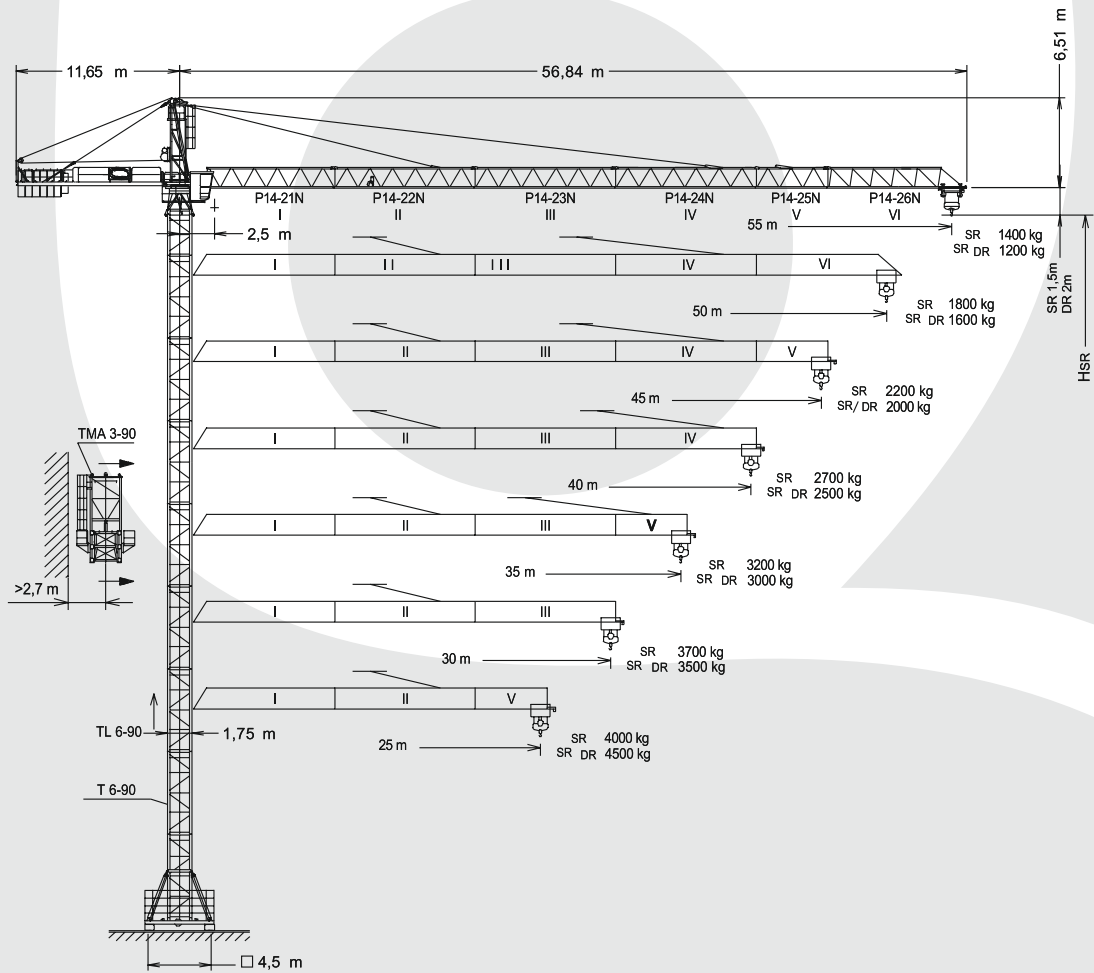
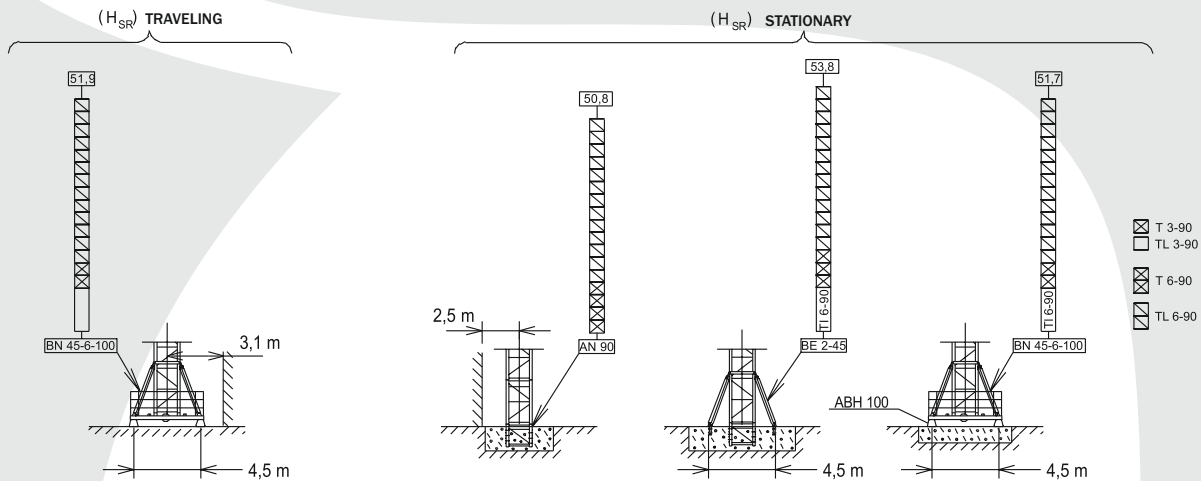


JASO J85

MAXIMUM CAPACITY: 6 TONS



Maximum hook height without anchor to building



- T 3-90
- TL 3-90
- T 6-90
- TL 6-90

TECHNICAL DATA:

MAXIMUM LOAD: 6 TONS
WORKING AREA: 360°

MAXIMUM JIB LENGTH : 55 m

JASO J85

MAXIMUM CAPACITY: 6 TONS



Load diagram JASO J85

WYSIĘGNIK	SR (kg)		SR1- 3000					SR2- 4000		3000-4000 kg
	55	50	45	40	35	30	25	3000-3560	3000-4000	
55 m	1400	1580	1800	2075	2430	2900	3000-3560	3000-4000	29,12-22,5 m	
50 m		1800	2045	2350	2745	3000-3265	3000-4000	32,35-25 m		
45 m			2200	2525	2945	3000-3500	3000-4000	34,41-26,59 m		
40 m				2700	3000-3145	3000-3735	3000-4000	36,47-28,18 m		
35 m					3000-3200	3000-3800	3000-4000	35-28,64 m		
30 m						3000-3700	3000-4000	30-27,95 m		
25 m							3000-4000	25 m		

Load diagram JASO J85

JIB	SR / DR (kg)		SR1 / DR1 — 3000 / 6000							3000 / 6000 kg
	55	50	45	40	35	30	25	20	15	
55 m	1200	1380	1600	1875	2230	2700	3000 / 3360	3000 / 4350	3000 / 6000	27,5 / 15 m
50 m		1600	1845	2150	2540	3000 / 3065	3000 / 3800	3000 / 4900	3000 / 6000	30,56 / 16,67 m
45 m			2000	2325	2745	3000 / 3300	3000 / 4080	3000 / 5250	3000 / 6000	32,5 / 17,75 m
40 m				2500	2945	3000 / 3535	3000 / 4360	3000 / 5600	3000 / 6000	34,44 / 18,79 m
35 m					3000	3000 / 3600	3000 / 4440	3000 / 5700	3000 / 6000	35 / 19,09 m
30 m						3000 / 3500	3000 / 4320	3000 / 5550	3000 / 6000	30 / 18,64 m
25 m							3000 / 4500	3000 / 5775	3000 / 6000	25 / 19,32 m

Lower ballast

For intermediate heights use ballast for higher height

Hook height (m)		19,6	31,6	40,6	46,6	52,6
Number of blocks ballast for assembling	Ballast block: 6000kg	6	8	10	12	14

Counterweight

JIB	2360 kg		1500 kg		Counterweight before jib assembly		
	55	50	45	40	35	30	25
SR							
SR / DR							
TOTAL (kg)	15660	14160	13300	11800	10940	10940	8580

JASO J85

MAXIMUM CAPACITY: 6 TONS



Packing list

DENOMINATION		L (m)	A (m)	H (m)	Weight (kg)
Tower section	T16-90	6,236	2,095	2,095	2500
	TL6-90	6,136	1,818	1,818	1892
	TL3-90	3,186	1,818	1,818	960
	T6-90	6,235	1,818	1,818	2280
	T3-90	3,235	1,818	1,818	1212
Slewing table + Tower head + slewing		3,390	2,060	2,150	3400
Tower head structure + hosting		6,164	1,200	1,350	1210
Slewing table + Tower head + slewing + hosting		9,554	1,920	2,440	4610
Jib section	P14-21N (I)	10,150	1,366	1,665	965
	P14-22N (II)	10,160	1,226	1,646	945
	P14-23N (III)	10,160	1,226	1,547	785
	P14-24N (IV)	10,160	1,226	1,547	655
	P14-25N (V)	5,267	1,226	1,665	345
	P14-26N (VI)	10,156	1,226	1,737	530
Hook assembly	SR	0,76	0,160	0,960	190
	DR	1	0,235	1,288	293
Crab	SR	1,100	1,330	0,730	195
	DR	1,410	1,471	1,204	295
Counterjib with platforms		10,70	1,410	0,430	1575
Platform and cabin		3,69	1,63	2,25	820
Counterweight	Big	1,08	0,50	2,02	2360
	Small	1,08	0,50	1,30	1500
Ballast		3,800	0,580	1,500	6000
Climbing cage		6,420	2,535	2,410	3080

Mechanisms features

*Optional															
		EC2556 SR1		* EC3380VF SR1		EC2544 SR2			* EC3360VF SR2		TG1125VF	OG1108VF	TC465VF	Th1210	
	t	1,5	3	1,5	3	2	4	4	2	4	0...25 m/min	0...0,2 0,2...0,4 0,4...0,8 r/min sl/min	0...15 15...32 32...65 m/min	1 m/min	
	m/min	56	28	7	0...80	0...40	44	22	5,5	0...60					0...30
	t	3	6	3	6										
	m/min	28	14	4	0...40	0...20									
kW		18,4		24,2		18,4			24,2		2 x 4	2 x 4	3	9,2	
Maximum hook course		SR 136 m en 3 capas 240 m en 5 capas max				SR 102 m en 3 capas 272 m en 7 capas max						400V 50Hz Required power EC 25XX=37,4 kW EC 33XXVF=43,2 kW *			

Towers

