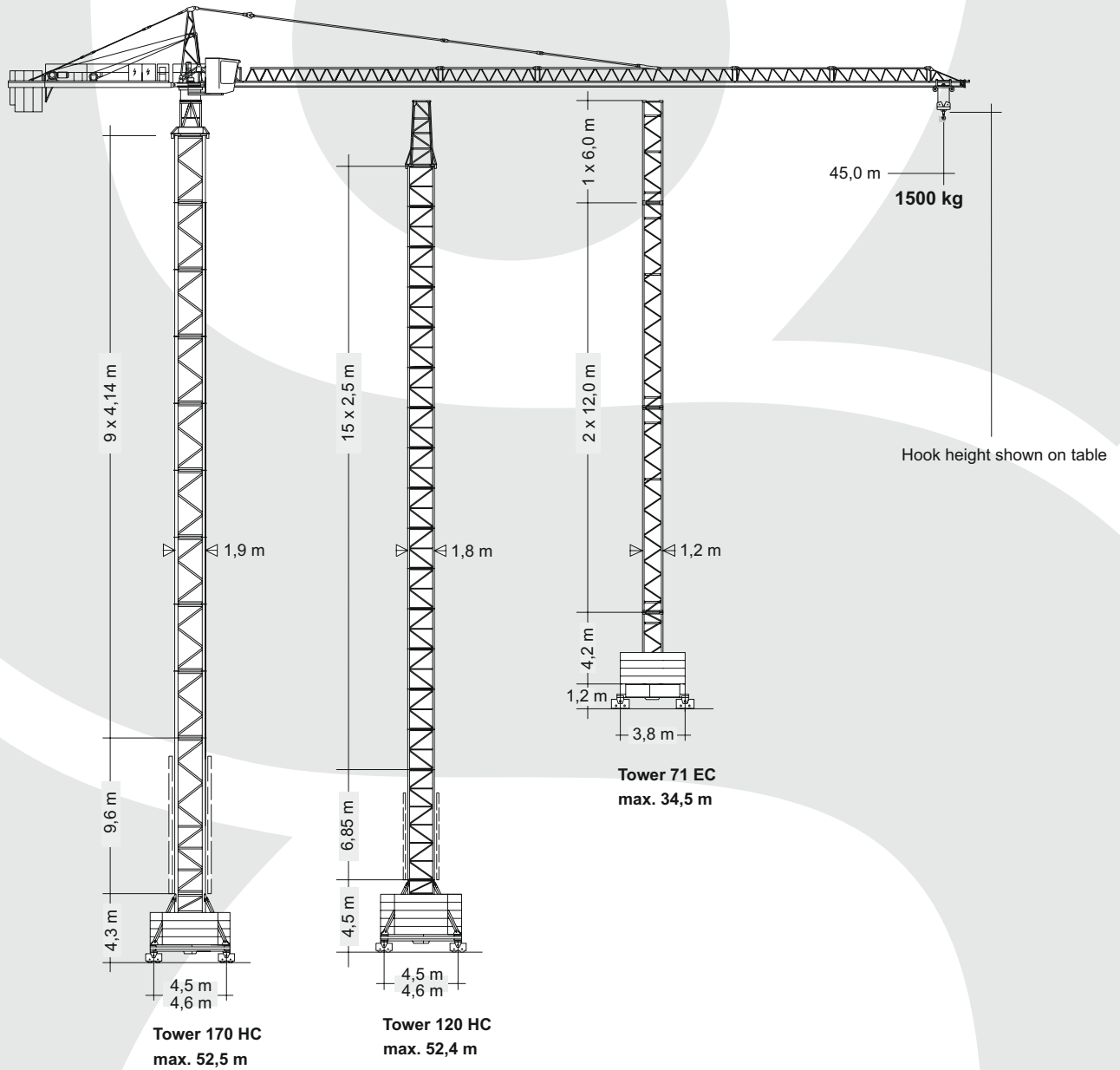


LIEBHERR 71EC

MAXIMUM CAPACITY: 5,6 TONS



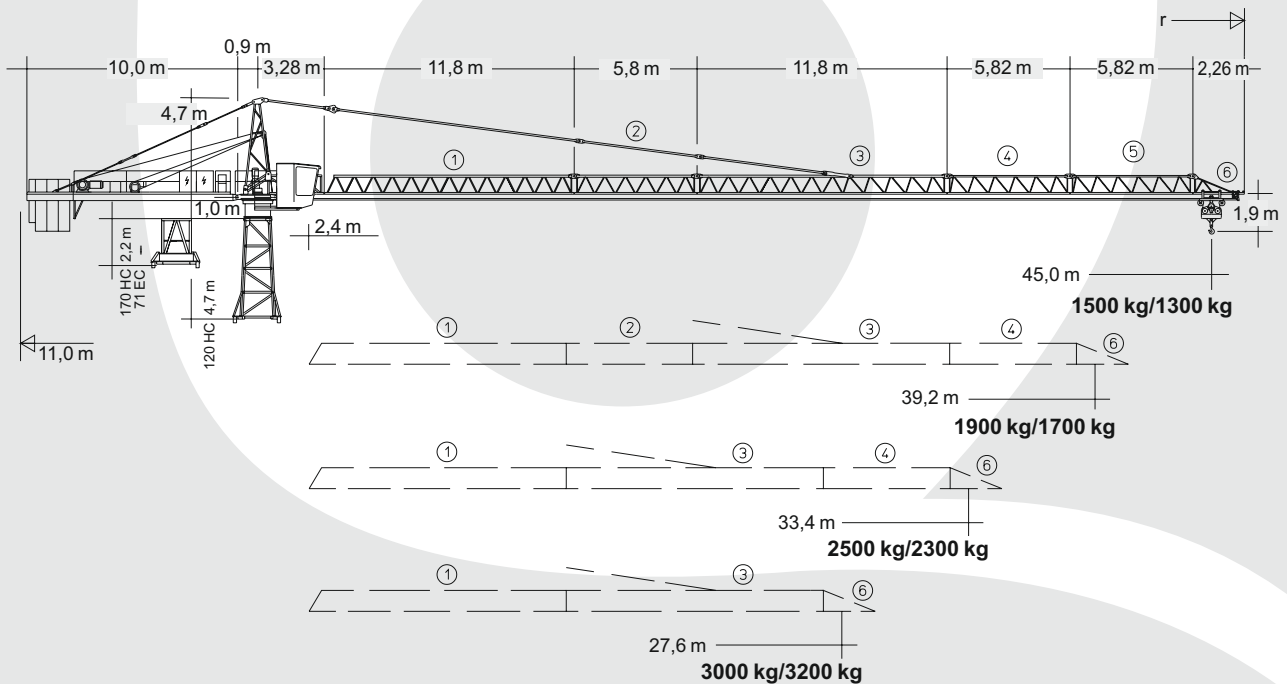
TECHNICAL DATA:

MAXIMUM CAPACITY: 5,6 TON

MAXIMUM LENGTH JIB : 45 m
CAPACITY ON MAXIMUM RADIUS : 1,5 t

LIEBHERR 71EC

MAXIMUM CAPACITY: 5,6 TONS



Hook height radius

tower	170 HC		120 HC	
	STATIONARY	TRAVELLING	STATIONARY	TRAVELLING
tower section				
	m		m	
0	11,1	15,2	10,6	14,9
1	15,2	19,4	13,1	17,4
2	19,4	23,5	15,6	19,9
3	23,5	27,7	18,1	22,4
4	27,7	31,8	20,6	24,9
5	31,8	35,9	23,1	27,4
6	35,9	40,1	25,6	29,9
7	40,1	44,2	28,1	32,4
8	44,2	48,4*	30,6	34,9
9	48,4*	52,5*	33,1	37,4
10	52,5*	-	35,6	39,9
11	-	-	38,1	42,4
12	-	-	40,6	44,9
13	-	-	43,1	47,4
14	-	-	45,6	49,9
15	-	-	48,1*	52,4*
min. internal radius of track		8,5 m		8,5 m

*Further increasing and fastening tower, consult manufacturer

LIEBHERR 71EC

MAXIMUM CAPACITY: 5,6 TONS



tower		71 EC									
tower section											
6 m	12 m										
1		m	6,3	m	6,3	m	6,1	m	5,3	m	11,1
2	1		12,3		12,3		12,1		11,3		17,1
3			18,3		18,3		18,1		17,3		23,1
4	2	1)	24,3		24,3		24,1		23,3		29,1
5			30,3		30,3		30,1		29,3		35,1
6	3		-		36,3		36,1		35,3		41,1
* +Base section 4,2 m			2) 34,5		40,5		40,3		39,5		45,3

* with reinforced bottom of the tower

Load diagram

Jib length		max. kg 	m/kg															
m	r		15,0	17,0	19,0	21,0	23,0	25,0	27,6	29,0	33,4	35,0	37,0	39,2	41,0	43,0	45,0	
45,0	(r = 46,7)	2,4 - 25,3 3000						3000	2700	2550	2150	2030	1900	1770	1680	1590	1500	
39,2	(r = 40,9)	2,4 - 26,7 3000						3000	2890	2720	2300	2180	2040	1900				
33,4	(r = 35,1)	2,4 - 28,6 3000						3000	3000	2950	2500							
27,6	(r = 29,3)	2,4 - 27,6 3000						3000	3000									
			m/kg															
m	r		15,0	17,0	19,0	21,0	23,0	25,0	27,6	29,0	33,4	35,0	37,0	39,2	41,0	43,0	45,0	
45,0	(r = 46,7)	2,4 - 25,3 2800	2,4 - 14,7 5600	5460	4640	4030	3550	3160	2840	2500	2350	1950	1830	1700	1570	1480	1390	1300
39,2	(r = 40,9)	2,4 - 26,7 2800	2,4 - 15,5 5600	5600	4960	4310	3800	3380	3050	2690	2520	2100	1980	1840	1700			
33,4	(r = 35,1)	2,4 - 28,6 2800	2,4 - 16,5 5600	5600	5390	4690	4130	3690	3320	2930	2750	2300						
27,6	(r = 29,3)	2,4 - 27,6 2800	2,4 - 17,6 5600	5600	5600	5090	4500	4020	3620	3200								




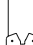


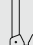





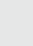


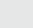
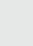
Load	Jib length (m)												
5600	15,0	17,0	19,0	21,0	23,0	25,0	27,6	29,0	33,4	35,0	37,0	39,2	45,0
5000													
4000													
3000													
2800													
2000													
1000													
0													

LIEBHERR 71EC

MAXIMUM CAPACITY: 5,6 TONS



Speed

	0,85 obr./min	5,0 kW	Winch type 22,0 / 18,0 / 4,0 kW, KL, max. hook height 60 m	Gear	kg	m/min	
	8,0 / 29,1 / 54,0 m/min	3,0 kW					
	25,0 m/min	2 x 2,2 kW (71 EC) 2 x 3,0 kW (120 HC) 2 x 7,5 kW (170 HC)					
Required power		Winch type		22,0 kW, FU, max. hook height 156 m	kg	m/min	
		22 kW	22 kW, FU				
kVA		40,0	30,0				
				  	3000	2800	7,6
					3000	2800	35,3
					1700	1700	70,0
					1700	1700	70,0
			  	5600	3,6		
				5600	17,6		
				3400	35,0		
			   	2900	2800	3,7	
				2900	2800	37,0	
				2300	2100	46,0	
				1400	1300	70,0	
			   	5600	1,9		
				5600	19,0		
				4500	23,0		
				2900	35,0		