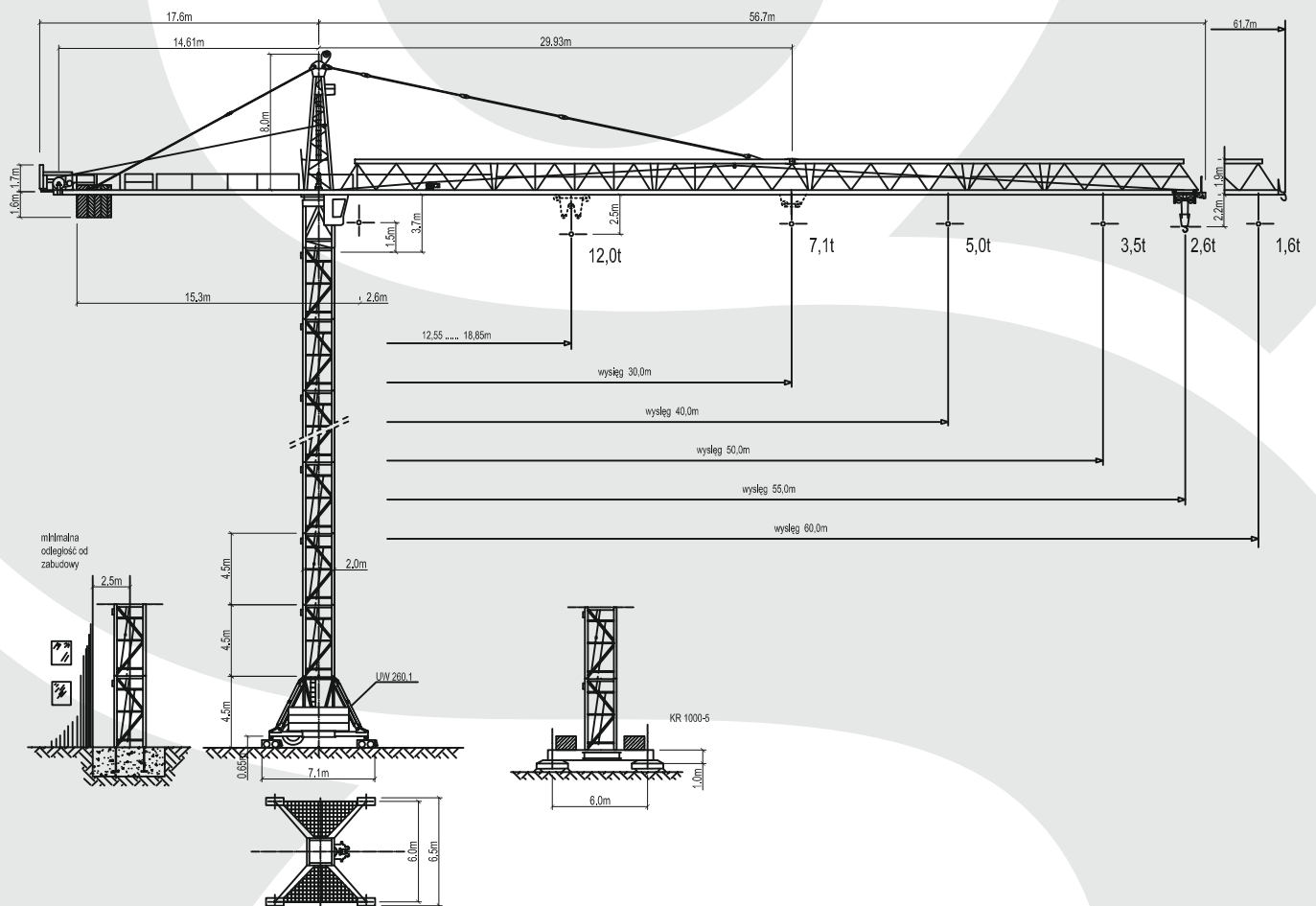


# WOLFF WK 192 SL

MAXIMUM CAPACITY: 12 TONS



## TECHNICAL DATA:

MAXIMUM LOAD: 12 TONS  
JIB LENGTH: 60 M

MAX LOAD AT THE END OF THE JIB: 1,6 TONS



[www.herkules-polska.pl](http://www.herkules-polska.pl)

# WOLFF WK 192 SL

MAXIMUM CAPACITY: 12 TONS



## Load diagram

		Reach (m)	2,6-	25	30	35	40	45	50	55	60	Capacity (m)
Jib length (m)	30	2,6 - 18,85	12,0	8,75	7,10							
	35	2,6 - 18,76		8,72	7,08	5,90						
	40	2,6 - 18,70		8,69	7,05	5,88	5,00					
	45	2,6 - 18,65		8,66	7,03	5,86	4,98	4,30				
	50	2,6 - 17,68		8,15	6,60	5,49	4,66	4,00	3,50			
	55	2,6 - 15,68		7,10	5,72	4,74	4,00	3,43	2,97	2,60		
	60	2,6 - 12,55		5,45	4,35	3,56	2,97	2,51	2,15	1,85	1,60	

## Mechanisms

Gear (Typ)	Operating speed		Rope system	max. hook height (m)	Power (kW)	Total power (kW)
		(m/min)				
Hw 6372	Lifting	3,0 t 6,0 t	50,0 28,0	2	200	54,4
	Lifting	6,0 t 12,0 t	25,0 14,0	4	100	
Tw 60 FSG	Trolley	do 6,0 t do 12,0 t	80/20 40/20		6,0	
Dw - FG	Slew		0,75 min <sup>-1</sup>		2 x 5,7	
Fw	Travelling		25		11 - 22	65,4 - 76,4

# WOLFF WK 192 SL

MAXIMUM CAPACITY: 12 TONS



## Tower configuration

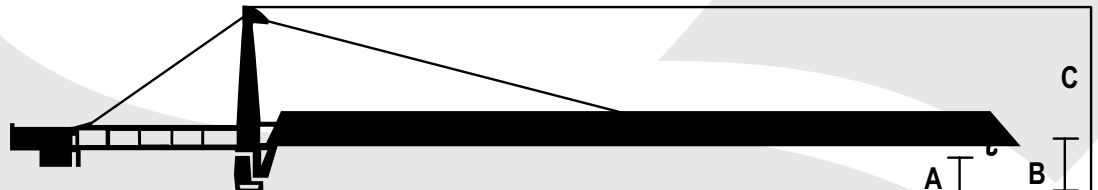
### For free-standing crane on fundation

Slewing part

Hook height A=1,5 m

Jib height B=3,7 m

Total height C=11,7 m



1	6,0		UT 20	UT 20	UT 20	UT 20	UT 20
2	10,5		UT 20	UT 20	UT 20	UT 20	UT 20
3	15,0		UT 20	UT 20	UT 20	UT 20	UT 20
4	19,5		UT 20	UT 20	UT 20	UT 20	UT 20
5	24,0		UT 20	UT 20	UT 20	UT 20	UT 20
6	28,5		UT 20	UT 20	UT 20	UT 20	UT 20
7	33,0		UT 20	UT 20	UT 20	TVA 20	TVA 20
8	37,5		UT 20	UT 20	TVA 20	TV 20	TV 20
9	42,0		UT 20	TVA 20	TV 20	TV 20	TV 20
10	46,5			TV 20	TV 20	TV 20	TV 20
11	51,0			TV 20	TV 20	TV 20	TV 20
12	55,5				TV 20	TV 20	TV 20
13	60,0				TV 20	TV 20	TV 20
14	64,5					TV 20	TV 20
15	69,0					TV 20	TVÜ 20
16	73,5						TV 25
17	78,0						TV 25
18	82,5						
<b>Section of tower</b>	<b>Hook height (m)</b>						

# WOLFF WK 192 SL

MAXIMUM CAPACITY: 12 TONS



## Tower configuration

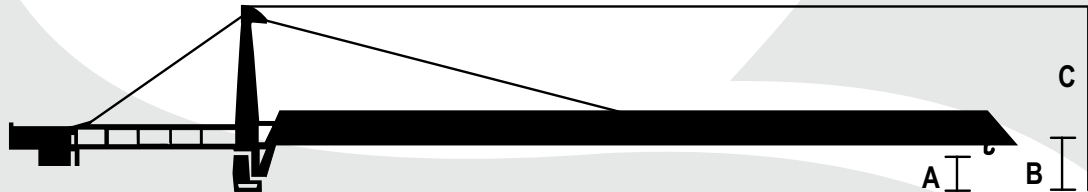
For free-standing crane on cross beam

### Slewing part

Hook height A=1,5 m

Jib height B=3,7 m

Total height C=11,7 m



1	6,0		UT 20	UT 20	UT 20	UT 20	UT 20
2	10,5		UT 20	UT 20	UT 20	UT 20	UT 20
3	15,0		UT 20	UT 20	UT 20	UT 20	UT 20
4	19,5		UT 20	UT 20	UT 20	UT 20	UT 20
5	24,0		UT 20	UT 20	UT 20	UT 20	UT 20
6	28,5		UT 20	UT 20	UT 20	UT 20	UT 20
7	33,0		UT 20	UT 20	UT 20	TVA 20	TVA 20
8	37,5		UT 20	UT 20	TVA 20	TV 20	TV 20
9	42,0			TVA 20	TV 20	TV 20	TV 20
10	46,5	UW 260.1		TV 20	TV 20	TV 20	TV 20
11	51,0				TV 20	TV 20	TV 20
12	55,5		UW 260.2		TV 20	TV 20	TV 20
13	60,0					TV 20	TV 20
14	64,5			UW 280.1			TV 20
15	69,0				UW 260.3 UW 460		TVÜ 20
16	73,5						TV 25
17	78,0						
18	82,5					UW 280.2 UW 480	
<b>Section of tower</b>	<b>Hook height (m)</b>						