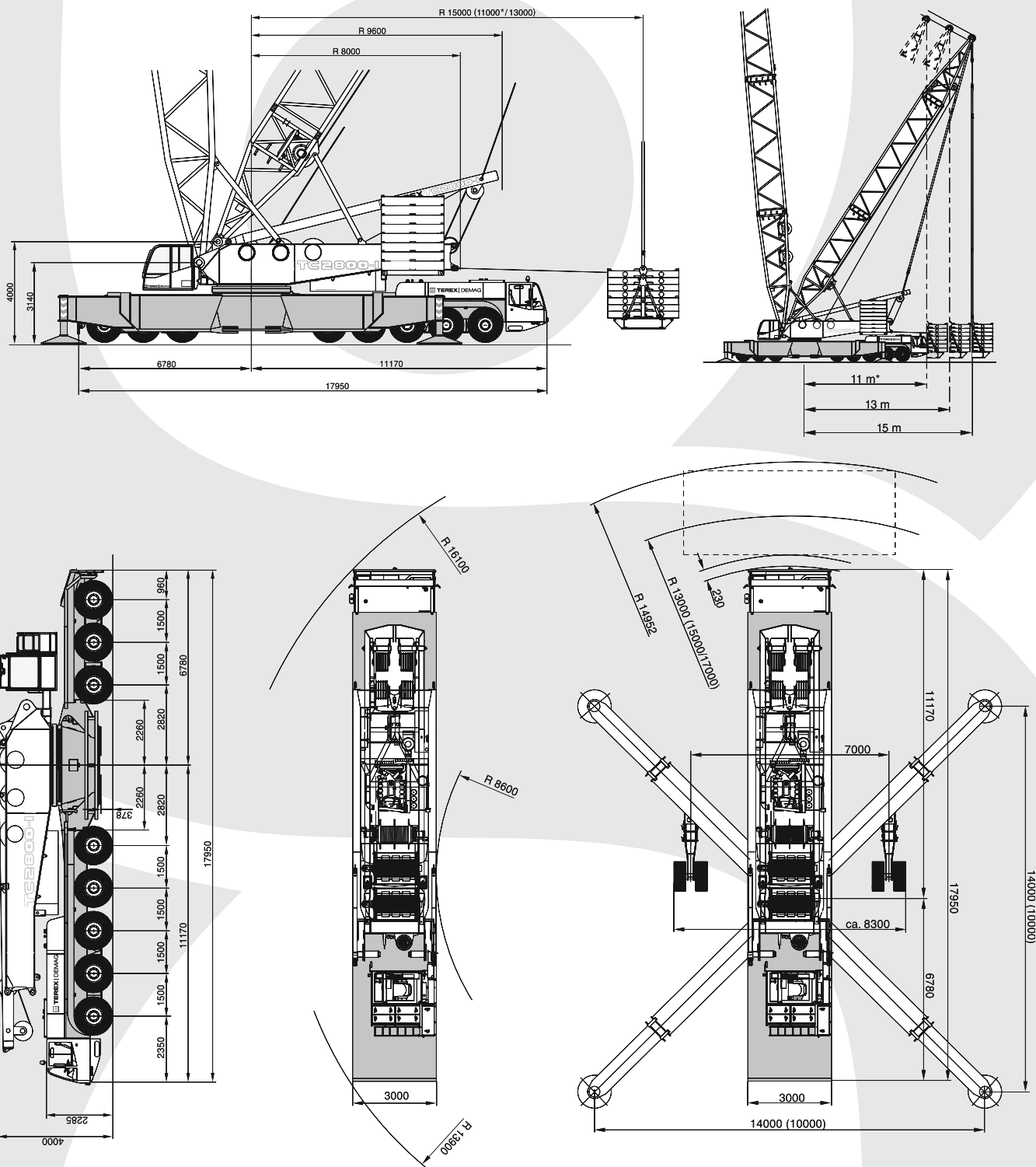


# TEREX DEMAG TC 2800

UDŹWIG MAKSYMALNY 600 TON

 **HERKULES**



## DANE TECHNICZNE:

UDŹWIG MAKSYMALNY: 600 TON  
MAKSYMALNA PRZECIWWAGA: 200 TON  
OBSZAR PRACY: 360°  
PRZECIWWAGA SUPERLIFT: 300 TON

DŁUGOŚĆ WYSIĘGNIKA:  
• PODSTAWOWEGO: od 24 do 84 M  
• POMOCNICZEGO: 12 M  
• WYCHYLNEGO: od 24 do 84 M

# TEREX DEMAG TC 2800

 **HERKULES**

UDŹWIG MAKSYMALNY 600 TON



36-54m



14m x 14m



360°



160t



DIN  
ISO



SSL  
HSSL

Tabela udźwęgów żurawia TEREX DEMAG TC 2800-1 - Wysięgnik podstawowy w wersji SSL + SUPERLIFT

m	36m			42m			48m			54m			m
	SSL		HSSL	SSL		HSSL	SSL		HSSL	SSL		HSSL	
	0t		0t - 300t	0t		0t - 300t	0t		0t - 300t	0t		0t - 300t	
	11-15m		11-15m	11-15m		11-15m	11-15m		11-15m	11-15m		11-15m	
t	t	t	t	t	t	t	t	t	t	t	t	t	
7	544,0	600,0	-	-	-	-	-	-	-	-	-	-	7
8	499,0	600,0	-	496,0	593,0	-	494,0	580,0	-	-	-	-	8
9	427,0	600,0	-	425,0	593,0	-	426,0	580,0	-	427,0	525	525,0	9
10	369,0	599,0	-	367,0	593,0	-	367,0	580,0	-	368,0	525	525,0	10
12	289,0	534,0	-	287,0	531,0	-	286,0	529,0	-	286,0	525	525,0	12
14	236,0	476,0	-	233,0	473,0	-	232,0	470,0	-	232,0	468	466,0	14
16	198,0	428,0	-	196,0	425,0	-	194,0	423,0	-	193,0	421	419,0	16
18	170,0	389,0	-	167,0	386,0	-	166,0	384,0	-	165,0	382	380,0	18
20	148,0	356,0	-	146,0	353,0	-	144,0	351,0	-	143,0	349	347,0	20
22	131,0	323,0	-	128,0	322,0	-	127,0	320,0	-	125,0	318	307,0	22
24	118,0	284,0	-	114,0	294,0	-	112,0	292,0	-	111,0	291	275,0	24
26	106,0	251,0	-	104,0	269,0	-	100,0	267,0	-	99,5	266	247,0	26
28	97,0	228,0	-	94,0	245,0	-	91,0	244,0	-	89,5	244	224,0	28
30	88,5	203,0	-	85,5	220,0	-	83,5	226,0	-	80,5	224	205,0	30
34	-	-	-	71,5	181,0	-	69,5	194,0	-	68,0	194	174,0	34
38	-	-	-	60,5	149,0	-	58,5	161,0	-	57,0	170	147,0	38
42	-	-	-	-	-	-	50,0	138,0	-	48,5	146	125,0	42
46	-	-	-	-	-	-	-	-	-	41,9	124	106,0	46
49	-	-	-	-	-	-	-	-	-	-	-	93,0	49



60-78m



14m x 14m



360°



160t



DIN  
ISO



SSL  
HSSL

Tabela udźwęgów żurawia TEREX DEMAG TC 2800-1 - Wysięgnik podstawowy w wersji SSL + SUPERLIFT

m	60m			66m			72m			78m			m
	SSL		HSSL	SSL		HSSL	SSL		HSSL	SSL		HSSL	
	0t		0t - 300t	0t		0t - 300t	0t		0t - 300t	0t		0t - 300t	
	11-15m		11-15m	11-15m		11-15m	11-15m		11-15m	11-15m		11-15m	
t	t	t	t	t	t	t	t	t	t	t	t	t	
9	426,0	476,0	476,0	-	-	-	-	-	-	-	-	-	9
10	368,0	476,0	476,0	369,0	414,0	421,0	350,0	373,0	393,0	-	-	-	10
11	327,0	476,0	476,0	327,0	414,0	421,0	318,0	373,0	393,0	-	-	364,0	11
12	286,0	476,0	476,0	285,0	414,0	421,0	286,0	373,0	393,0	285,0	316,0	364,0	12
14	231,0	466,0	464,0	231,0	414,0	421,0	231,0	373,0	393,0	231,0	316,0	364,0	14
16	193,0	419,0	417,0	192,0	409,0	415,0	192,0	373,0	393,0	191,0	316,0	364,0	16
18	164,0	380,0	378,0	163,0	378,0	376,0	163,0	362,0	374,0	162,0	315,0	364,0	18
20	142,0	347,0	344,0	141,0	346,0	335,0	140,0	344,0	329,0	139,0	306,0	322,0	20
22	124,0	317,0	305,0	123,0	315,0	298,0	122,0	314,0	293,0	121,0	298,0	286,0	22
24	110,0	289,0	274,0	109,0	287,0	268,0	108,0	286,0	264,0	107,0	285,0	258,0	24
26	98,0	265,0	247,0	97,0	264,0	243,0	96,0	262,0	239,0	95,0	261,0	234,0	26
28	88,0	243,0	226,0	86,5	242,0	221,0	85,5	242,0	218,0	84,5	240,0	214,0	28
30	79,5	224,0	205,0	78,0	223,0	203,0	77,0	222,0	200,0	76,0	222,0	196,0	30
34	65,5	192,0	174,0	64,0	191,0	172,0	63,0	191,0	171,0	61,5	190,0	168,0	34
38	55,5	169,0	150,0	53,5	167,0	148,0	52,0	166,0	148,0	50,5	166,0	146,0	38
42	47,1	150,0	130,0	45,8	149,0	130,0	43,5	147,0	128,0	42,2	146,0	127,0	42
46	40,3	131,0	112,0	38,8	133,0	113,0	37,2	132,0	114,0	35,9	131,0	113,0	46
50	34,8	113,0	96,5	33,1	118,0	99,5	31,4	119,0	100,0	30,0	118,0	100,0	50
54	30,3	100,0	82,0	28,4	103,0	86,5	26,6	107,0	88,5	25,1	107,0	89,0	54
58	-	-	-	24,6	91,0	75,0	22,6	94,5	78,0	21,0	96,5	79,0	58
59	-	-	-	-	-	72,0	21,7	91,5	75,5	20,1	93,7	76,7	59
62	-	-	-	-	-	-	19,3	82,5	68,0	17,5	85,5	70,0	62
65	-	-	-	-	-	-	-	-	61,0	15,3	78,0	63,6	65
66	-	-	-	-	-	-	-	-	-	14,6	75,5	61,5	66
70	-	-	-	-	-	-	-	-	-	12,2	69,0	53,5	70

# TEREX DEMAG TC 2800

UDŹWIG MAKSYMALNY 600 TON

 **HERKULES**



90-120m



14m x 14m



360°



160t



DIN  
ISO



SSL  
LSL

Tabela udźwignięw żurawia TEREX DEMAG TC 2800-1 - Wysięgnik podstawowy w wersji SSL/LSL + SUPERLIFT

m	90m			96m			102m			m
	SSL/LSL		SSL/LSL SGL max.	SSL/LSL		SSL/LSL SGL max.	SSL/LSL		SSL/LSL SGL max.	
	0t	0t - 300t		0t	0t - 300t		0t	0t - 300t		
12	239,0	248,0	249,0	207,0	215,0	224,0	-	-	-	12
13	230,0	248,0	249,0	206,0	214,0	223,0	-	-	204,0	13
14	221,0	248,0	249,0	206,0	214,0	222,0	173,0	181,0	203,0	14
16	189,0	248,0	249,0	192,0	213,0	220,0	171,0	179,0	199,0	16
18	164,0	248,0	249,0	159,0	212,0	217,0	155,0	178,0	196,0	18
20	144,0	246,0	247,0	141,0	211,0	215,0	137,0	176,0	193,0	20
22	126,0	241,0	241,0	125,0	209,0	210,0	122,0	174,0	190,0	22
24	111,0	235,0	236,0	111,0	205,0	205,0	109,0	172,0	185,0	24
26	99,0	230,0	230,0	99,0	202,0	200,0	98,5	170,0	180,0	26
28	89,0	224,0	211,0	88,5	199,0	195,0	88,0	168,0	175,0	28
30	80,0	212,0	195,0	79,5	194,0	188,0	79,5	166,0	170,6	30
34	66,0	191,0	169,6	65,5	178,0	165,3	65,0	156,0	156,6	34
38	54,5	169,0	148,0	54,0	163,0	145,3	54,0	145,0	141,6	38
42	46,1	149,0	130,0	45,5	148,0	128,0	45,1	134,0	125,0	42
46	38,9	133,0	116,6	38,3	133,0	114,6	37,8	124,0	111,6	46
50	33,0	120,0	104,8	32,3	120,0	102,8	31,8	114,0	100,0	50
54	28,6	109,0	94,5	27,3	108,0	92,5	26,8	107,0	90,5	54
58	24,3	100,0	85,1	23,6	99,5	84,1	22,4	98,5	82,5	58
62	20,6	91,5	77,1	19,8	91,0	76,3	19,2	91,0	74,8	62
66	17,3	84,0	69,5	16,6	83,0	69,0	16,0	83,5	67,5	66
70	14,5	76,0	63,1	13,7	76,0	63,0	13,1	77,0	61,5	70
74	12,0	68,5	56,8	11,2	69,0	57,1	10,5	70,0	56,0	74
78	9,9	61,0	50,5	9,0	63,0	51,5	8,3	64,0	51,0	78
80	-	-	47,7	8,0	59,7	48,9	7,3	61,0	48,6	80
82	-	-	-	7,0	56,5	46,3	6,3	58,0	46,2	82
85	-	-	-	-	-	42,5	4,9	53,8	42,6	85
86	-	-	-	-	-	-	4,5	52,5	41,4	86
90	-	-	-	-	-	-	-	48,3	36,8	90

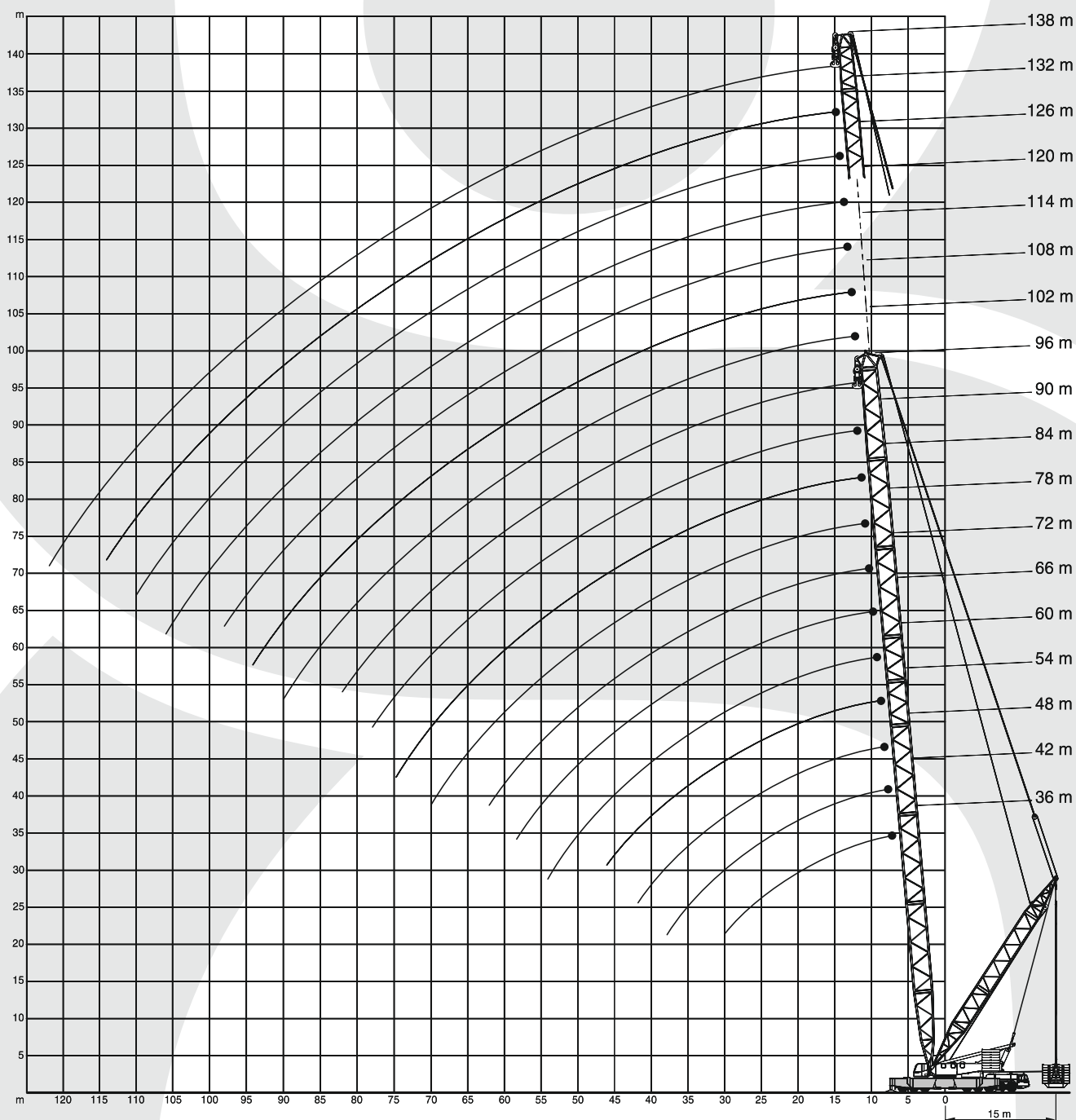
m	108m			114m			120m			m
	SSL/LSL		SSL/LSL SGL max.	SSL/LSL		SSL/LSL SGL max.	SSL/LSL		SSL/LSL SGL max.	
	0t	0t - 300t		0t	0t - 300t		0t	0t - 300t		
13	-	-	183,0	-	-	-	-	-	-	13
14	147,0	153,0	183,0	129,0	134,0	162,0	119,0	122,0	146,0	14
16	143,0	150,0	181,0	126,0	132,0	161,0	117,0	121,0	146,0	16
18	139,0	147,0	180,0	124,0	131,0	160,0	115,0	120,0	145,0	18
20	133,0	145,0	178,0	121,0	129,0	159,0	112,0	118,0	144,0	20
22	118,0	142,0	176,0	115,0	127,0	158,0	110,0	117,0	143,0	22
24	106,0	139,0	174,0	103,0	126,0	157,0	101,0	115,0	142,0	24
26	96,5	136,0	171,0	94,0	124,0	155,0	92,0	114,0	141,0	26
28	87,0	133,0	169,0	85,5	122,0	154,0	83,5	112,0	140,0	28
30	78,0	130,0	166,0	78,0	120,0	152,0	76,5	111,0	138,0	30
34	64,0	124,0	150,6	63,5	117,0	144,6	63,5	108,0	134,6	34
38	52,5	119,0	136,6	52,5	113,0	133,0	52,0	104,0	126,0	38
42	43,9	114,0	120,0	43,6	108,0	117,0	43,4	100,0	112,0	42
46	36,7	108,0	107,3	36,3	104,0	104,6	36,1	97,0	100,3	46
50	30,6	103,0	96,1	30,3	99,0	93,6	30,0	93,0	89,8	50
54	25,6	98,0	86,5	25,2	95,0	84,0	24,9	90,0	80,5	54
58	21,2	93,0	78,5	20,8	91,0	76,3	20,6	86,0	72,8	58
62	18,0	88,0	71,3	17,0	86,0	69,3	16,8	82,0	65,8	62
66	14,7	82,0	65,0	14,3	81,5	63,0	13,5	79,0	59,5	66
70	11,8	75,5	59,0	11,4	74,5	57,3	11,1	73,5	54,5	70
74	9,3	69,0	53,5	8,8	68,0	52,0	8,5	68,0	49,7	74
78	7,0	63,5	48,7	6,5	63,0	47,1	6,2	62,5	45,1	78
82	5,0	58,0	44,3	4,4	58,0	42,8	4,2	58,0	40,8	82
86	-	53,0	40,0	-	53,8	38,7	-	53,0	36,8	86
90	-	48,0	35,9	-	48,3	34,9	-	49,1	33,2	90
94	-	44,0	31,8	-	44,	31,2	-	45,0	29,8	94
96	-	-	29,8	-	42,5	29,4	-	43,0	28,2	96
98	-	-	-	-	41,1	27,6	-	41,0	26,5	98
101	-	-	-	-	-	24,9	-	38,7	24,1	101
102	-	-	-	-	-	-	-	38,0	23,3	102
106	-	-	-	-	-	-	-	34,6	20,2	106

# TEREX DEMAG TC 2800

UDŹWIG MAKSYMALNY 600 TON

 **HERKULES**

Zasięg pracy: wysięgnik podstawowy w wersji SSL+SUPERLIFT i SSL/LSL+SUPERLIFT



# TEREX DEMAG TC 2800

UDŹWIG MAKSYMALNY 600 TON

 **HERKULES**



84 -102m



12m



14m x 14m



360°



200t



DIN  
ISO

Tabela udźwignów żurawia TC2800 SH/LH + LF2

		84m						90m							
		SH/LH+ LF2		SH/LH+LF2 SGL.max.		SH/LH+ LF2		SH/LH+LF2 SGL.max.		SH/LH+ LF2		SH/LH+LF2 SGL.max.			
		10°		15°		20°		10°		15°		20°			
m	t	t	t	t	t	t	t	t	t	t	t	t	t	m	
14	107,0	125,0	-	-	-	-	91,0	125,0	-	-	-	-	14		
15	107,0	125,0	96,0	119,0	83,5	-	91,0	125,0	83,5	118,0	-	-	15		
16	106,0	125,0	96,0	116,0	81,5	89,5	91,0	125,0	83,5	118,0	77,0	90,5	16		
18	103,0	125,0	94,0	110,0	78,0	85,5	88,5	125,0	82,0	112,0	76,5	86,5	18		
20	101,0	125,0	92,0	104,0	74,5	82,0	86,0	118,0	80,0	106,0	74,5	83,0	20		
22	99,5	120,0	90,0	99,0	71,5	78,5	84,0	111,0	78,0	101,0	72,5	79,5	22		
24	95,5	114,0	85,5	94,0	68,5	75,5	81,5	104,0	76,0	96,5	69,5	76,5	24		
26	89,5	106,0	81,5	90,0	65,5	72,5	79,0	97,5	74,5	92,0	67,0	74,0	26		
28	83,0	98,0	78,0	86,0	63,5	69,5	77,0	90,0	73,0	88,5	64,5	71,0	28		
30	76,5	90,5	75,0	82,5	61,0	67,5	74,5	83,5	71,5	83,5	62,5	69,0	30		
34	67,5	77,0	69,0	76,0	57,0	63,0	69,5	71,5	68,0	73,0	58,5	64,5	34		
38	61,0	66,0	62,5	66,5	53,5	59,0	63,5	60,5	62,5	63,5	55,0	60,5	38		
42	54,5	55,5	56,0	56,0	50,5	56,0	56,0	51,5	56,5	55,0	52,0	55,5	42		
46	48,2	47,7	49,2	48,1	47,3	48,5	48,0	44,2	48,4	46,9	48,8	47,3	46		
50	41,6	41,1	42,6	41,5	42,2	41,8	41,5	38,2	41,9	40,2	42,2	40,6	50		
54	35,0	35,6	36,1	36,0	37,0	36,3	36,1	33,8	36,4	34,5	36,7	34,9	54		
58	30,0	30,7	30,6	31,1	32,2	31,4	31,3	29,1	31,6	29,5	31,9	29,9	58		
62	26,6	26,6	27,1	26,9	28,6	27,2	27,1	25,0	27,4	25,3	27,7	25,6	62		
66	23,1	23,0	23,6	23,3	25,0	23,5	23,6	21,4	23,8	21,7	24,1	22,0	66		
70	19,6	19,9	20,1	20,2	21,5	20,4	20,5	18,3	20,7	18,5	20,9	18,8	70		
74	16,2	17,2	16,6	17,4	17,9	17,6	17,8	15,5	18,0	15,8	18,2	16,0	74		
78	12,7	14,9	13,2	15,0	14,4	15,2	15,4	13,2	15,6	13,4	15,8	13,5	78		
82	9,2	12,8	9,7	12,9	10,8	13,0	13,3	11,0	13,5	11,2	13,6	11,4	82		
83	8,3	12,3	8,8	12,4	9,9	12,5	12,8	10,5	13,0	10,7	13,1	10,9	83		
86	5,8	10,9	6,2	11,0	-	-	11,5	9,2	11,6	9,3	11,7	9,4	86		
87	4,9	10,5	5,3	10,6	-	-	11,0	8,7	11,1	8,9	11,2	9,0	87		
88	-	-	-	-	-	-	10,6	8,3	10,7	8,4	10,8	8,5	88		
90	-	-	-	-	-	-	9,8	7,5	9,9	7,6	-	-	90		
92	-	-	-	-	-	-	9,1	6,7	9,2	6,8	-	-	92		

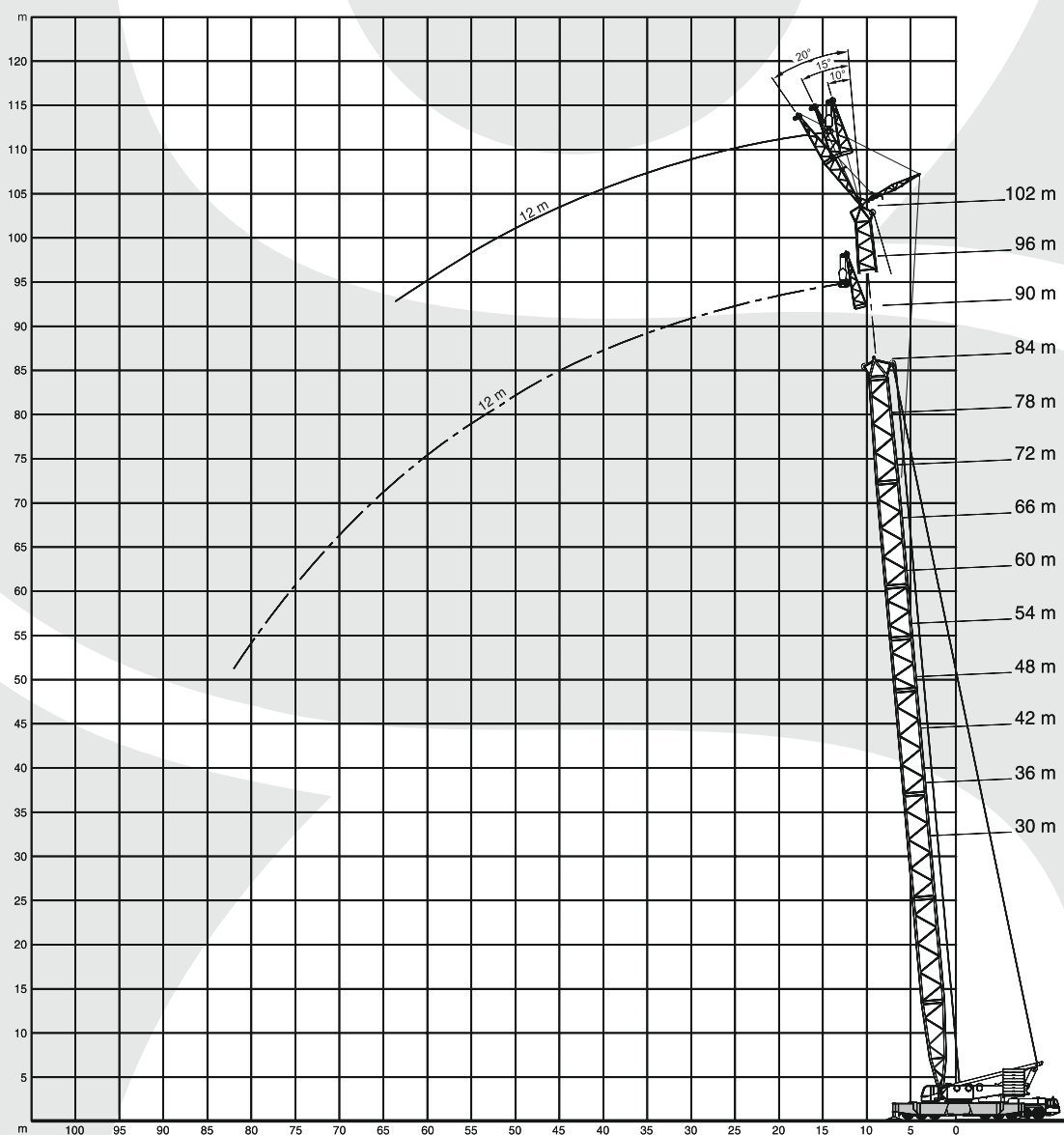
		96m						102m							
		SH/LH+ LF2		SH/LH+LF2 SGL.max.		SH/LH+ LF2		SH/LH+LF2 SGL.max.		SH/LH+ LF2		SH/LH+LF2 SGL.max.			
		10°		15°		20°		10°		15°		20°			
m	t	t	t	t	t	t	t	t	t	t	t	t	t	m	
15	86,5	116,0	-	-	-	-	72,5	109,0	-	-	-	-	15		
16	86,5	116,0	80,0	109,0	-	-	72,5	109,0	67,0	104,0	-	-	16		
17	85,5	114,5	80,0	109,0	73,5	88,0	72,5	109,0	67,0	104,0	62,0	88,5	17		
18	84,5	113,0	79,0	109,0	73,5	87,5	71,5	109,0	67,0	104,0	62,0	88,5	18		
20	82,5	109,0	77,0	105,0	72,0	84,0	69,5	105,0	65,5	102,0	61,5	85,0	20		
22	80,5	105,0	75,5	101,0	70,5	81,0	67,5	101,0	63,5	99,0	60,0	82,0	22		
24	78,5	101,0	74,0	96,5	69,5	78,0	66,0	96,5	62,0	96,5	58,5	79,0	24		
26	76,5	97,0	72,0	92,5	68,0	75,0	64,0	92,5	60,5	92,5	57,5	76,5	26		
28	73,0	91,0	70,0	88,0	66,0	72,5	62,5	88,0	59,0	89,5	56,0	74,0	28		
30	70,0	84,5	68,0	83,0	63,5	70,0	61,0	82,0	58,0	84,5	55,0	71,5	30		
34	63,5	73,5	63,5	74,0	59,5	66,0	58,0	71,0	55,5	73,5	53,0	67,0	34		
38	58,0	63,0	58,5	64,5	56,0	62,0	55,0	61,5	53,0	63,5	50,5	63,5	38		
42	53,0	53,5	53,5	54,0	53,0	54,5	50,5	52,5	49,3	53,0	47,5	53,5	42		
46	47,2	45,6	47,7	46,1	48,1	46,6	46,6	44,4	45,4	44,9	44,0	45,4	46		
50	40,7	38,9	41,1	39,4	41,5	39,8	40,0	37,4	40,4	37,9	40,4	38,4	50		
54	35,1	33,0	35,5	33,5	35,9	33,9	34,3	31,5	34,7	32,0	35,1	32,5	54		
58	30,3	28,1	30,6	28,5	31,0	28,9	29,4	26,6	29,8	27,0	30,2	27,4	58		
62	26,1	24,0	26,4	24,3	26,7	24,6	25,2	22,4	25,6	22,8	25,9	23,1	62		
66	22,6	20,4	22,8	20,7	23,1	21,0	21,7	18,7	22,0	19,1	22,3	19,4	66		
67	21,8	19,6	22,0	19,9	22,3	20,2	-	17,9	-	18,3	21,4	18,6	67		
70	19,5	17,2	19,7	17,5	19,9	17,8	-	15,6	-	15,9	-	16,2	70		
74	16,7	14,5	17,0	14,7	17,2	15,0	-	12,8	-	13,1	-	13,4	74		
78	14,4	12,1	14,6	12,3	14,7	12,5	-	10,4	-	10,7	-	10,9	78		
82	12,2	9,9	12,4	10,1	12,6	10,3	-	8,3	-	8,5	-	8,7	82		
86	10,4	8,0	10,5	8,2	10,7	8,4	-	6,3	-	6,5	-	6,7	86		
90	8,7	6,3	8,8	6,5	8,9	6,6	-	4,6	-	4,8	-	5,0	90		
92	7,9	5,5	8,0	5,7	8,1	5,8	-	3,8	-	4,0	-	4,2	92		
93	7,5	5,1	7,6	5,3	7,8	5,4	-	-	-	3,6	-	3,8	93		
94	7,2	4,7	7,3	5,0	-	-	-	-	-	-	-	-	94		
97	6,2	3,8	6,3	3,9	-	-	-	-	-	-	-	-	97		

# TEREX DEMAG TC 2800

UDŹWIG MAKSYMALNY 600 TON

 **HERKULES**

Zasięg pracy: wysięgnik podstawowy w wersji SH+LF2 i SH/LH+LF2

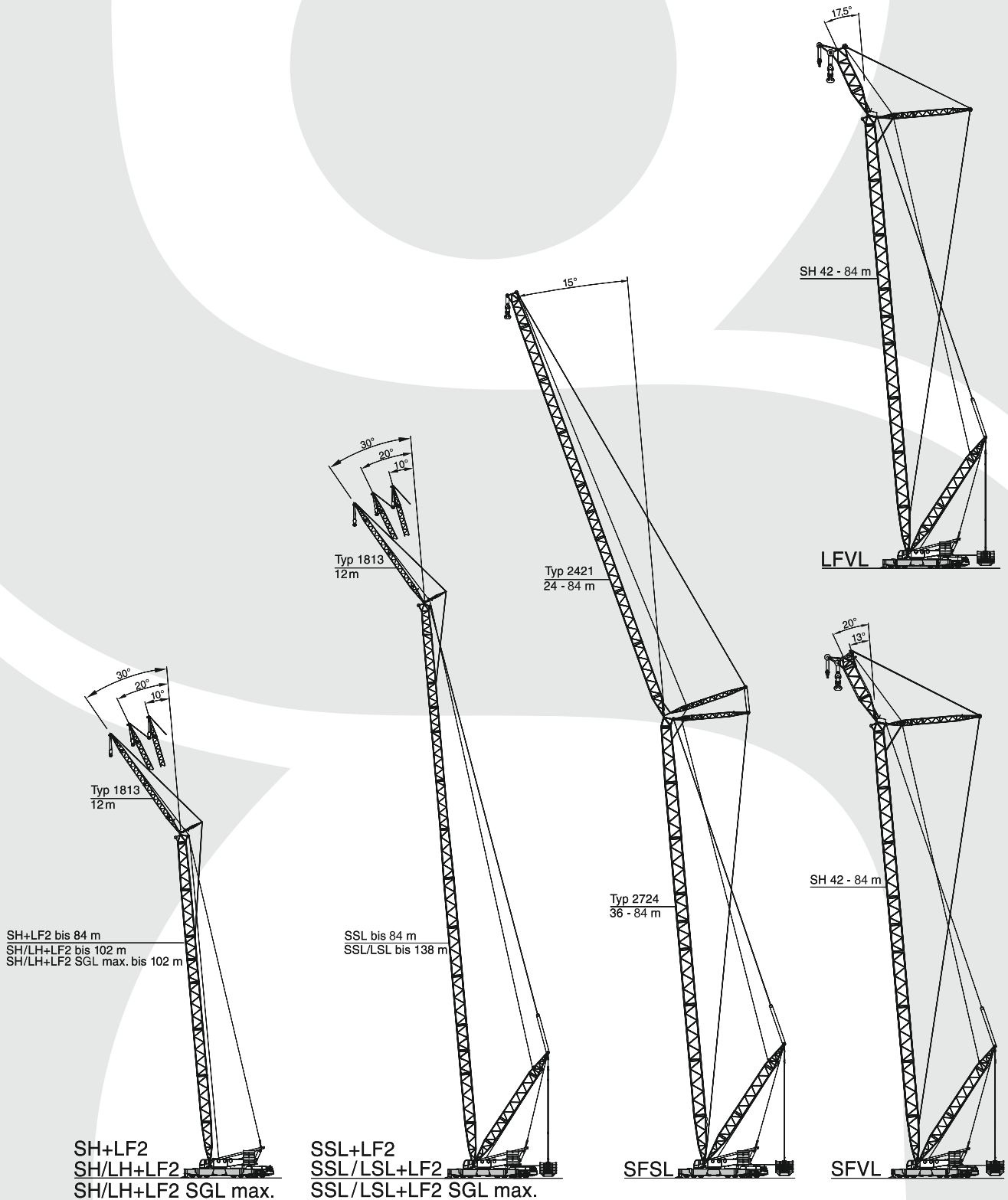


# TEREX DEMAG TC 2800

UDŹWIG MAKSYMALNY 600 TON

 **HERKULES**

## Konfiguracje żurawia TC 2800-1



# TEREX DEMAG TC 2800

UDŹWIG MAKSYMALNY 600 TON

 **HERKULES**

## Konfiguracje żurawia TC 2800-1

Typ 2724  
24 - 84 m

SH

Typ 2724/2421  
66 - 102 m (78 - 108 m)

SH/LH  
(SH/LH SGL max.)

Typ 2724  
36 - 96 m (54 - 108 m)

SSL (HSLL)

Typ 2724 / 2421  
90 - 138 m (90 - 138 m)

SSL/LSL  
(SSL/LSL SGL max.)

Typ 2421  
24 - 84 m

SW

Typ 2724  
30 - 66 m

Typ 2421  
24 - 84 m

Typ 2724  
36 - 84 m (54 - 108 m)

SWSL (HSWSL)